

Product datasheet for TP316492M

ANGEL2 (NM_144567) Human Recombinant Protein

Product data:

Product Type:	Recombinant Proteins
Description:	Recombinant protein of human angel homolog 2 (Drosophila) (ANGEL2), 100 µg
Species:	Human
Expression Host:	HEK293T
Expression cDNA Clone or AA Sequence:	>RC216492 representing NM_144567 Red=Cloning site Green=Tags(s)
	MEAWRCVRKGYGHCVVGRGRYPMPFHHSRSLGRDWTPWENLQRCCWNRHISSCMRWPGHYSRAPYPYFS SRHFSLNWRPPCLFESRTQFQYCNWRPDNLSQTSLIHLSSYVMNAEGDEPSSKRRKHQGVIKRNWEYICS HDKEKTKILGDKNVDPKCEDSENKFDVMSYNILSQDLLEDNSHLYRHCRPVLHWSFRFPNILKEIKH FDADVLCLQEVQEDHYGAEIRPSLES LGYHCEYKMRTGRKPDGCAICFKHSKFSLLSVNPVEFFRPDISL LDRDNVGLVLLLQPKIPYAACPAICVANTHLLYNPRRGDIKLTQLAMLLAEISSVAHQKDGFCPIVMCG DFNSVPGSPLYSFIEGKLNIEGLPIGKVSGQEQQSSRGQRILSIWPPNLGISQNCVYEVQQVPKVEKT DSDLTQTLKQTEVLVTAEKLSSNLQHHFSLSSVYSHYFPDTGIPEVTTCHSRSAITVDYIFYSAEKEDV AGHPGAEVALVGGKLLARLSLLTEQDLWTVNGLPNENNSSDHLPLLAKFRLEL
	TRTRPLEQKLISEEDLAANDILDYKDDDDKV
Tag:	C-Myc/DDK
Predicted MW:	62.2 kDa
Concentration:	>0.05 µg/µL as determined by microplate BCA method
Purity:	> 80% as determined by SDS-PAGE and Coomassie blue staining
Buffer:	25 mM Tris-HCl, 100 mM glycine, pH 7.3, 10% glycerol
Preparation:	Recombinant protein was captured through anti-DDK affinity column followed by conventional chromatography steps.
Note:	For testing in cell culture applications, please filter before use. Note that you may experience some loss of protein during the filtration process.
Storage:	Store at -80°C.
Stability:	Stable for 12 months from the date of receipt of the product under proper storage and handling conditions. Avoid repeated freeze-thaw cycles.



[View online »](#)

RefSeq: [NP_653168](#)

Locus ID: 90806

UniProt ID: [Q5VTE6, Q96AL9](#)

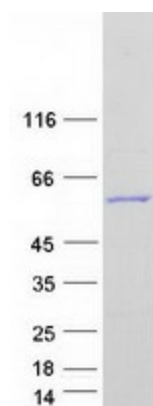
RefSeq Size: 4668

Cytogenetics: 1q32.3

RefSeq ORF: 1632

Synonyms: Ccr4d; KIAA0759L

Product images:



Coomassie blue staining of purified ANGEL2 protein (Cat# [TP316492]). The protein was produced from HEK293T cells transfected with ANGEL2 cDNA clone (Cat# [RC216492]) using MegaTran 2.0 (Cat# [TT210002]).