

## Product datasheet for TP316466

### GIPC (GIPC1) (NM\_005716) Human Recombinant Protein

#### Product data:

**Product Type:** Recombinant Proteins

**Description:** Recombinant protein of human GIPC PDZ domain containing family, member 1 (GIPC1), transcript variant 1, 20 µg

**Species:** Human

**Expression Host:** HEK293T

**Expression cDNA Clone or AA Sequence:** >RC216466 representing NM\_005716  
Red=Cloning site Green=Tags(s)

MPLGLGRRKKAPPLVENEEAEPGRGGLGVGEPGLGGGGSGGPQMGLPPPPPALRPLRVFHTQLAHGSPT  
GRIEGFTNVKELYGKIAEAFRLPTAEVMFCTLNTHKVDMDKLLGGQIGLEDFIFAHVKGQRKEVEVKSE  
DALGLTITDNGAGYAFIKRIKEGSVIDHIHLISVGDMEIANGQSLGCRHYEVARLLKELPRGRTFTLK  
LTEPRKAFDMISQRSAGRPGSGPQLGTGRGTLRLRSRGPATVEDLPSAFEKAIKVDLLESYMGIRD  
TELAATMVELGDKRNPDELAELDERLGDFAFPDEFVFDVWGAIGDAKVGRY

TRTRPLEQKLISEEDLAANDILDYKDDDDKV

**Tag:** C-Myc/DDK

**Predicted MW:** 35.9 kDa

**Concentration:** >0.05 µg/µL as determined by microplate BCA method

**Purity:** > 80% as determined by SDS-PAGE and Coomassie blue staining

**Buffer:** 25 mM Tris-HCl, 100 mM glycine, pH 7.3, 10% glycerol

**Preparation:** Recombinant protein was captured through anti-DDK affinity column followed by conventional chromatography steps.

**Note:** For testing in cell culture applications, please filter before use. Note that you may experience some loss of protein during the filtration process.

**Storage:** Store at -80°C.

**Stability:** Stable for 12 months from the date of receipt of the product under proper storage and handling conditions. Avoid repeated freeze-thaw cycles.

**RefSeq:** [NP\\_005707](#)

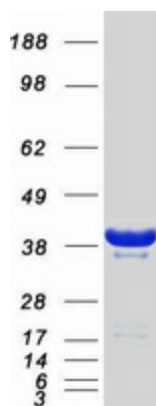
**Locus ID:** 10755



[View online »](#)

UniProt ID:	<a href="#">O14908</a> , <a href="#">A0A024R7I0</a>
RefSeq Size:	1947
Cytogenetics:	19p13.12
RefSeq ORF:	999
Synonyms:	C19orf3; GIPC; GLUT1CBP; Hs.6454; IIP-1; NIP; OPDM2; RGS19IP1; SEMCAP; SYNECTIIN; SYNECTIN; TIP-2
Summary:	GIPC1 is a scaffolding protein that regulates cell surface receptor expression and trafficking (Lee et al., 2008 [PubMed 18775991]).[supplied by OMIM, Apr 2009]
Protein Families:	Druggable Genome

### Product images:



Coomassie blue staining of purified GIPC1 protein (Cat# TP316466). The protein was produced from HEK293T cells transfected with GIPC1 cDNA clone (Cat# [RC216466]) using MegaTran 2.0 (Cat# [TT210002]).