

Product datasheet for TP316448

Phospholipase C gamma 1 (PLCG1) (NM_002660) Human Recombinant Protein

Product data:

Product Type:	Recombinant Proteins
Description:	Recombinant protein of human phospholipase C, gamma 1 (PLCG1), transcript variant 1
Species:	Human
Expression Host:	HEK293T
Expression cDNA Clone or AA Sequence:	>RC216448 representing NM_002660 Red=Cloning site Green=Tags(s)

MAGAASPCANGCGPGAPSDAEVLHLCRSLEVGTVMTLFYSSKSRPERKTFQVKLETRQITWSRGADKIE
GAIDIREIKEIRPGKTSRDFDRYQEDPAFRPDQSHCFVILYGMFRLKTLSLQATSEDEVNMWIKGLTWL
MEDTLQAPTPLQIERWLRKQFYSDNRNREDRISAKDLKNMLSQVNYRVPNMRFLRERLTDLEQRSGDITY
GQFAQLYRSLMYSQAQKTMDLPFLEASTLRAGERPELRCRVSLPEFQQFLLDYQGELWAVDRLQVQEFMFLS
LRDPLREIEEYFFLDEFVTFVFLSKENSVWNSQLDAVCPDTMNNPLSHYWISSSHNTYLTGDQFSSSSL
EAYARCLRMGCRCIELDCWDGPDGMPVIYHGHTLTTKIKFSDVLHTIKEHAFVASEYPVILSIEDHCSIA
QQRNMAQYFKKVLGDTLLTKPVEISADGLPSPNQLKRKILIKHKKLAEGSAYEEVPTSMMYSENDISNSI
KNGILYLEDPVNHWEYPHYFVLTSSKIYSEETSSDQGNEDEEPEKVVSSSTELHSNEKWFGHGLGAGRD
GRHIAERLLTEYCIETGAPDGSFLVRESETFVGDYTLFWRNGKVQHCRVHSRQDAGTPKFFLTDNLVFD
SLYDLITHYQQVPLRCNEFEMRLSEVPVQTNAMESKEWYHASLTRAQAEHMLMRVPRDGAFLVRKRNEPN
SYAISFRAEGKIKHCRVQQEGQTVMLGNSEFDSLVDLISYEEKHPLYRKMKLRYPINEEALEKIGTAEPD
YGALYEGRNPGFYVEANPMPFTKCAVKALFDYKAQREDELFTKSAIQNVEKQEGGWWRGDYGGKKQLW
FPSNYVEEMVNPVALEPEREHLDENSPLGDLRGVLDVPACQIAIRPEGKNNRFLVFSISMASVAHWSLD
VAADSQEELQDWVKKIREVAQTADARLTEGKIMERRKKIALELSELVYCRPVPFDEEKIGTERACYRDM
SSFPEKAEKYVVKAKGKKFLQYNRLQLSRIYKQRLDSSNYDPLPMWICGSQVLFQTPDKPMQMN
QALFMTGRHCGYVLQPSTMRDEAFDPFDKSSLRGLEPCAISIEVLGARHLPKNGRIVCPFVEIEVAGAE
YDSTKQKTEFVVDNGLNPVWPAKPFHFQISNPEFAFLRFVVEEDMFSDQNFLAQATFPVKGLKTYRAV
PLKNNYSEDLASLLIKIDIFPAKQENGDLSPFSGTSLRERGSASGQLFHGRAREGSFESRYQQPFED
FRISQEHLDHFDSRERRAPRRTRVNGDNRL

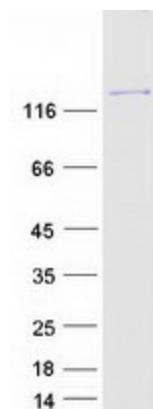
TRTRPLEQKLISEEDLAANDILDYKDDDDKV

Tag:	C-Myc/DDK
Predicted MW:	148.5 kDa
Concentration:	>50 µg/mL as determined by microplate BCA method



[View online »](#)

Purity:	> 80% as determined by SDS-PAGE and Coomassie blue staining
Buffer:	25 mM Tris.HCl, pH 7.3, 100 mM glycine, 10% glycerol
Preparation:	Recombinant protein was captured through anti-DDK affinity column followed by conventional chromatography steps.
Storage:	Store at -80°C.
Stability:	Stable for 12 months from the date of receipt of the product under proper storage and handling conditions. Avoid repeated freeze-thaw cycles.
RefSeq:	NP_002651
Locus ID:	5335
UniProt ID:	P19174 , Q9UFY1 , Q4LE43
RefSeq Size:	5205
Cytogenetics:	20q12
RefSeq ORF:	3873
Synonyms:	NCKAP3; PLC-II; PLC1; PLC148; PLCgamma1
Summary:	The protein encoded by this gene catalyzes the formation of inositol 1,4,5-trisphosphate and diacylglycerol from phosphatidylinositol 4,5-bisphosphate. This reaction uses calcium as a cofactor and plays an important role in the intracellular transduction of receptor-mediated tyrosine kinase activators. For example, when activated by SRC, the encoded protein causes the Ras guanine nucleotide exchange factor RasGRP1 to translocate to the Golgi, where it activates Ras. Also, this protein has been shown to be a major substrate for heparin-binding growth factor 1 (acidic fibroblast growth factor)-activated tyrosine kinase. Two transcript variants encoding different isoforms have been found for this gene. [provided by RefSeq, Jul 2008]
Protein Families:	Druggable Genome
Protein Pathways:	Calcium signaling pathway, Epithelial cell signaling in Helicobacter pylori infection, ErbB signaling pathway, Fc epsilon RI signaling pathway, Fc gamma R-mediated phagocytosis, Glioma, Inositol phosphate metabolism, Leukocyte transendothelial migration, Metabolic pathways, Natural killer cell mediated cytotoxicity, Neurotrophin signaling pathway, Non-small cell lung cancer, Pathways in cancer, Phosphatidylinositol signaling system, T cell receptor signaling pathway, VEGF signaling pathway, Vibrio cholerae infection

Product images:

Coomassie blue staining of purified PLCG1 protein (Cat# TP316448). The protein was produced from HEK293T cells transfected with PLCG1 cDNA clone (Cat# [RC216448]) using MegaTran 2.0 (Cat# [TT210002]).