

Product datasheet for **TP316443L**

Presenilin 1 (PSEN1) (NM_000021) Human Recombinant Protein

Product data:

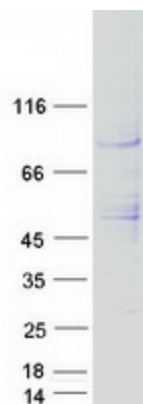
Product Type:	Recombinant Proteins
Description:	Recombinant protein of human presenilin 1 (PSEN1), transcript variant 1, 1 mg
Species:	Human
Expression Host:	HEK293T
Expression cDNA Clone or AA Sequence:	>RC216443 representing NM_000021 Red =Cloning site Green =Tags(s)
	<p>MTELPAPLSYFQNAQMSEDNHLSTVRSQNDNRERQEHNDRRSLGHPEPLSNRPGQNSRQVVEQDEEED EELTLKYGAKHVIMLFVPVTLCMVVVATIKSVSFYTRKDGQLIYTPFTEDETETVGQRALHSILNAAIMI SVIVVMTILLVLYKYRCYKVIHAWLISSLLLLFFFSFIYLGVEFKTYNVAVDYITVALLIWNFGVVGM ISIHWKGPLRLQQAYLIMISALMALVFIKYLPEWTAWLILAVISVYDLVAVLCPKGPLRMLVETAQERNE TLFPALIYSSTMVWLVNMAEGDPEAQRVSKNSKYNNAESTERESQDTVAENDDGGFSEEWEAQRDShLGP HRSTPESRAAVQELSSSILAGEDPEERGVKLGDFIFYSVLVGKASATASGDWNTTIACFVAILIGLCL LLLLLAIFKKALPALPISITFGLVYFATDYLVPFMDQLAFHQFYI</p> <p>TRTRPLEQKLISEEDLAANDILDYKDDDDKV</p>
Tag:	C-Myc/DDK
Predicted MW:	52.5 kDa
Concentration:	>0.05 µg/µL as determined by microplate BCA method
Purity:	> 80% as determined by SDS-PAGE and Coomassie blue staining
Buffer:	25 mM Tris-HCl, 100 mM glycine, pH 7.3, 10% glycerol
Preparation:	Recombinant protein was captured through anti-DDK affinity column followed by conventional chromatography steps.
Note:	For testing in cell culture applications, please filter before use. Note that you may experience some loss of protein during the filtration process.
Storage:	Store at -80°C.
Stability:	Stable for 12 months from the date of receipt of the product under proper storage and handling conditions. Avoid repeated freeze-thaw cycles.
RefSeq:	<u>NP_000012</u>



[View online »](#)

Locus ID:	5663
UniProt ID:	P49768 , A0A024R6A3
RefSeq Size:	2763
Cytogenetics:	14q24.2
RefSeq ORF:	1401
Synonyms:	ACNINV3; AD3; FAD; PS-1; PS1; S182
Summary:	<p>Alzheimer's disease (AD) patients with an inherited form of the disease carry mutations in the presenilin proteins (PSEN1; PSEN2) or in the amyloid precursor protein (APP). These disease-linked mutations result in increased production of the longer form of amyloid-beta (main component of amyloid deposits found in AD brains). Presenilins are postulated to regulate APP processing through their effects on gamma-secretase, an enzyme that cleaves APP. Also, it is thought that the presenilins are involved in the cleavage of the Notch receptor, such that they either directly regulate gamma-secretase activity or themselves are protease enzymes. Several alternatively spliced transcript variants encoding different isoforms have been identified for this gene, the full-length nature of only some have been determined. [provided by RefSeq, Aug 2008]</p>
Protein Families:	Druggable Genome, Protease, Transmembrane
Protein Pathways:	Alzheimer's disease, Neurotrophin signaling pathway, Notch signaling pathway, Wnt signaling pathway

Product images:



Coomassie blue staining of purified PSEN1 protein (Cat# [TP316443]). The protein was produced from HEK293T cells transfected with PSEN1 cDNA clone (Cat# [RC216443]) using MegaTran 2.0 (Cat# [TT210002]).