

## Product datasheet for **TP316442M**

### FOXL1 (NM\_005250) Human Recombinant Protein

#### Product data:

**Product Type:** Recombinant Proteins  
**Description:** Recombinant protein of human forkhead box L1 (FOXL1), 100 µg  
**Species:** Human  
**Expression Host:** HEK293T  
**Expression cDNA Clone or AA Sequence:** >RC216442 representing NM\_005250  
**Red**=Cloning site **Green**=Tags(s)

MSHLFDPRLPALAASPMLYLYGPERPGLPLAFAPAAAALAASGRAETPQKPPYSYIALIAMAIQDAPEQRV  
TLNGIYQFIMDRFPFYHDNRQGWQNSIRHNLSLNDCFVKVPREKGRPGKGSYWTLDPRCLDMFENGNYRR  
RKRKPKPGGAPEAKRPRAETHQRSAEAQPEAGSGAGGSGPAISRLQAAPAGPSPLLDGSPAPLHWPG  
TASPNEADAGDAAQGAAAVAVGQAARTGDGPGSPLRPASRSSPKSSDKSKSFSIDSILAGKQGQKPPSGDE  
LLGGAKPGPGGRLGASLLAASSSLRPPFNASLMLDPHVQGGFYQLGIPFLSYFPLQVPDVLHFQ

**TR**TRPLEQKLISEEDLAANDILDYKDDDDDKV

**Tag:** C-Myc/DDK  
**Predicted MW:** 36.3 kDa  
**Concentration:** >0.05 µg/µL as determined by microplate BCA method  
**Purity:** > 80% as determined by SDS-PAGE and Coomassie blue staining  
**Buffer:** 25 mM Tris-HCl, 100 mM glycine, pH 7.3, 10% glycerol  
**Preparation:** Recombinant protein was captured through anti-DDK affinity column followed by conventional chromatography steps.  
**Note:** For testing in cell culture applications, please filter before use. Note that you may experience some loss of protein during the filtration process.  
**Storage:** Store at -80°C.  
**Stability:** Stable for 12 months from the date of receipt of the product under proper storage and handling conditions. Avoid repeated freeze-thaw cycles.  
**RefSeq:** [NP\\_005241](#)  
**Locus ID:** 2300



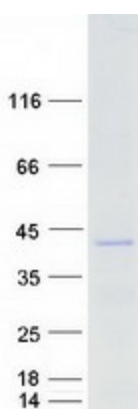
[View online »](#)

UniProt ID: [Q12952](#), [Q498Y4](#)  
RefSeq Size: 1038  
Cytogenetics: 16q24.1  
RefSeq ORF: 1035  
Synonyms: FKH6; FKHL11; FREAC7

**Summary:** This gene encodes a member of the forkhead/winged helix-box (FOX) family of transcription factors. FOX transcription factors are characterized by a distinct DNA-binding forkhead domain and play critical roles in the regulation of multiple processes including metabolism, cell proliferation and gene expression during ontogenesis. [provided by RefSeq, Nov 2012]

**Protein Families:** Transcription Factors

### Product images:



Coomassie blue staining of purified FOXL1 protein (Cat# [TP316442]). The protein was produced from HEK293T cells transfected with FOXL1 cDNA clone (Cat# [RC216442]) using MegaTran 2.0 (Cat# [TT210002]).