

## Product datasheet for **TP316420M**

### **RAD1 (NM\_002853) Human Recombinant Protein**

#### **Product data:**

<b>Product Type:</b>	Recombinant Proteins
<b>Description:</b>	Recombinant protein of human RAD1 homolog ( <i>S. pombe</i> ) (RAD1), transcript variant 1, 100 µg
<b>Species:</b>	Human
<b>Expression Host:</b>	HEK293T
<b>Expression cDNA Clone or AA Sequence:</b>	>RC216420 protein sequence <b>Red</b> =Cloning site <b>Green</b> =Tags(s)
	 MPLLTQQIQDEDDQYSLVASLDNVRNLSTILKAIHFREHATCFATKNGIKVTVENAKCVQANAFIQAGIF QEFKVQEE SVTFRINLTVLLDCLSI FGSSPMPGTLTALRM CYQGYPLMLFLEEGGWTVCKINTQEPE ETLDFDFCSTNVINKIILQSEGLREAFSELDMTSEVLQITMSPDKPYFRLSTFGNAGSSHLDPKSDMLM EAFHCNQTQVNRYKISLLKPSTKALVLSCKVSIRTDNRGFLSLQYMIRNEDGQICFVEYYCCPDEEVPE ES  <b>TRTRPLEQKLISEEDLAANDILDYKDDDDKV</b>
<b>Tag:</b>	C-Myc/DDK
<b>Predicted MW:</b>	31.6 kDa
<b>Concentration:</b>	>0.05 µg/µL as determined by microplate BCA method
<b>Purity:</b>	> 80% as determined by SDS-PAGE and Coomassie blue staining
<b>Buffer:</b>	25 mM Tris-HCl, 100 mM glycine, pH 7.3, 10% glycerol
<b>Preparation:</b>	Recombinant protein was captured through anti-DDK affinity column followed by conventional chromatography steps.
<b>Note:</b>	For testing in cell culture applications, please filter before use. Note that you may experience some loss of protein during the filtration process.
<b>Storage:</b>	Store at -80°C.
<b>Stability:</b>	Stable for 12 months from the date of receipt of the product under proper storage and handling conditions. Avoid repeated freeze-thaw cycles.
<b>RefSeq:</b>	<a href="#">NP_002844</a>
<b>Locus ID:</b>	5810



[View online »](#)

UniProt ID: [O60671](#), [A0A024R045](#)

RefSeq Size: 4683

Cytogenetics: 5p13.2

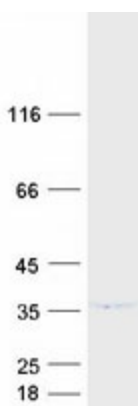
RefSeq ORF: 846

Synonyms: HRAD1; REC1

**Summary:** This gene encodes a component of a heterotrimeric cell cycle checkpoint complex, known as the 9-1-1 complex, that is activated to stop cell cycle progression in response to DNA damage or incomplete DNA replication. The 9-1-1 complex is recruited by RAD17 to affected sites where it may attract specialized DNA polymerases and other DNA repair effectors. Alternatively spliced transcript variants of this gene have been described. [provided by RefSeq, Jan 2009]

**Protein Families:** Druggable Genome

### Product images:



Coomassie blue staining of purified RAD1 protein (Cat# [TP316420]). The protein was produced from HEK293T cells transfected with RAD1 cDNA clone (Cat# [RC216420]) using MegaTran 2.0 (Cat# [TT210002]).