

Product datasheet for **TP316420**

RAD1 (NM_002853) Human Recombinant Protein

Product data:

Product Type:	Recombinant Proteins
Description:	Recombinant protein of human RAD1 homolog (<i>S. pombe</i>) (RAD1), transcript variant 1, 20 µg
Species:	Human
Expression Host:	HEK293T
Expression cDNA Clone or AA Sequence:	>RC216420 protein sequence Red =Cloning site Green =Tags(s)

MPLLTQQIQDEDDQYSLVASLDNVRNLSTILKAIHFREHATCFATKNGIKVTVENAKCVQANAFIQAGIF
QEFKVQEE SVTFRINLTVLLDCLSI FGSSPMPGTLTALRM CYQGYPLMLFLEEGG WTVCKINTQEPE
ETLDFDFCSTNVINKIILQSEGLREAFSELDMTSEVLQITMSPDKPYFRLSTFGNAGSSHLDPKDS
DLMEAFHCNQTQVNRYKISLLKPSTKALVLSCKVSIRTDNRGFLSLQYMIRNEDGQICFVEYYCCPDEE
VPES

TRTRPLE**Q**KLISEEDLAANDILDYKDDDDK**V**

Tag:	C-Myc/DDK
Predicted MW:	31.6 kDa
Concentration:	>0.05 µg/µL as determined by microplate BCA method
Purity:	> 80% as determined by SDS-PAGE and Coomassie blue staining
Buffer:	25 mM Tris-HCl, 100 mM glycine, pH 7.3, 10% glycerol
Preparation:	Recombinant protein was captured through anti-DDK affinity column followed by conventional chromatography steps.
Note:	For testing in cell culture applications, please filter before use. Note that you may experience some loss of protein during the filtration process.
Storage:	Store at -80°C.
Stability:	Stable for 12 months from the date of receipt of the product under proper storage and handling conditions. Avoid repeated freeze-thaw cycles.
RefSeq:	NP_002844
Locus ID:	5810



[View online »](#)

UniProt ID: [O60671](#), [A0A024R045](#)

RefSeq Size: 4683

Cytogenetics: 5p13.2

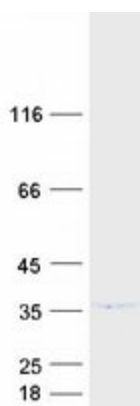
RefSeq ORF: 846

Synonyms: HRAD1; REC1

Summary: This gene encodes a component of a heterotrimeric cell cycle checkpoint complex, known as the 9-1-1 complex, that is activated to stop cell cycle progression in response to DNA damage or incomplete DNA replication. The 9-1-1 complex is recruited by RAD17 to affected sites where it may attract specialized DNA polymerases and other DNA repair effectors. Alternatively spliced transcript variants of this gene have been described. [provided by RefSeq, Jan 2009]

Protein Families: Druggable Genome

Product images:



Coomassie blue staining of purified RAD1 protein (Cat# TP316420). The protein was produced from HEK293T cells transfected with RAD1 cDNA clone (Cat# [RC216420]) using MegaTran 2.0 (Cat# [TT210002]).