

Product datasheet for TP316416M

CYP21A2 (NM_000500) Human Recombinant Protein

Product data:

Product Type: Recombinant Proteins
Description: Recombinant protein of human cytochrome P450, family 21, subfamily A, polypeptide 2 (CYP21A2), transcript variant 1, 100 µg
Species: Human
Expression Host: HEK293T
Expression cDNA Clone or AA Sequence: >RC216416 protein sequence
Red=Cloning site **Green**=Tags(s)

MLLLGLLLLLPLLAGARLLWNWWKLQSLHLPPLAPGFLHLLQPDLPIYLLGLTQKFGPIYRLHLGLQDW
VLNSKRTIEEAMVKKWADFAGRPEPTYKLVSRNYPDLSLGDYSLLWKAHKKLRSALLGIRDSMEPVV
EQLTQEFCEMRMQPGTPVAIEEFSLTCSIICYLTFGDKIKDDNLMPAYYKCIQEVLTWSHWSIQIV
DVIPFLRFFPNPGLRRLKQAIEKRHDHIVEMQLRQHKESSLVAGQWRDMMDYMLQGVAQPSMEEGSGQLLEG
HVHMAAVDLLIGGTETTANTLSWAVFLLHHPEIQRLQEELDHGPGASSRVYPYKDRARLPLLNATI
AEVLRRLRPVPLALPHRTRPSSISGYDIPEGTVIIPNLQGAHLDET VWERPHEFWPDRFLEPGKNSRAL
AFGCGARVCLGEPLARLELFVVLTRLLQAFTLLPSGDALPSLQPLPHCSVILKMQPFQVRLQPRGMGAHS
PGQSQ

TRTRPLEQKLISEEDLAANDILDYKDDDDKV

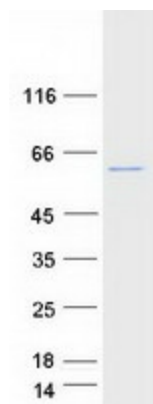
Tag: C-Myc/DDK
Predicted MW: 55.8 kDa
Concentration: >0.05 µg/µL as determined by microplate BCA method
Purity: > 80% as determined by SDS-PAGE and Coomassie blue staining
Buffer: 25 mM Tris-HCl, 100 mM glycine, pH 7.3, 10% glycerol
Preparation: Recombinant protein was captured through anti-DDK affinity column followed by conventional chromatography steps.
Note: For testing in cell culture applications, please filter before use. Note that you may experience some loss of protein during the filtration process.
Storage: Store at -80°C.



[View online »](#)

Stability:	Stable for 12 months from the date of receipt of the product under proper storage and handling conditions. Avoid repeated freeze-thaw cycles.
RefSeq:	NP_000491
Locus ID:	1589
UniProt ID:	P08686 , Q16874 , Q08AG9
RefSeq Size:	2131
Cytogenetics:	6p21.33
RefSeq ORF:	1485
Synonyms:	CA21H; CAH1; CPS1; CYP21; CYP21B; P450c21B
Summary:	This gene encodes a member of the cytochrome P450 superfamily of enzymes. The cytochrome P450 proteins are monooxygenases which catalyze many reactions involved in drug metabolism and synthesis of cholesterol, steroids and other lipids. This protein localizes to the endoplasmic reticulum and hydroxylates steroids at the 21 position. Its activity is required for the synthesis of steroid hormones including cortisol and aldosterone. Mutations in this gene cause congenital adrenal hyperplasia. A related pseudogene is located near this gene; gene conversion events involving the functional gene and the pseudogene are thought to account for many cases of steroid 21-hydroxylase deficiency. Two transcript variants encoding different isoforms have been found for this gene. [provided by RefSeq, Jul 2008]
Protein Families:	Druggable Genome, P450
Protein Pathways:	C21-Steroid hormone metabolism, Metabolic pathways

Product images:



Coomassie blue staining of purified CYP21A2 protein (Cat# [TP316416]). The protein was produced from HEK293T cells transfected with CYP21A2 cDNA clone (Cat# [RC216416]) using MegaTran 2.0 (Cat# [TT210002]).