

Product datasheet for **TP316335L**

FCRL4 (NM_031282) Human Recombinant Protein

Product data:

Product Type:	Recombinant Proteins
Description:	Recombinant protein of human Fc receptor-like 4 (FCRL4), 1 mg
Species:	Human
Expression Host:	HEK293T
Expression cDNA Clone or AA Sequence:	>RC216335 representing NM_031282 Red =Cloning site Green =Tags(s)

MLLWASLLAFAPVCGQSAAAHKPVISVHPPWTTFFKGERVTLTCNGFQFYATEKTTWYHQHYWGEKLTLT
PGNTLEVRESGLYRCQARGSPRSNPVRLLFSSDSLILQAPYSVFEGDTLVLRCHRRRKEKLTAVKYTWNG
NILSISNKSWDLLIPQASSNNNGNYRCIGYGDENDVFRSNFKIIKIQELFPHPELKATDSQPTEGNSVNL
SCETQLPPERSDTPLHFNFRRDGEVILSDWSTYPELQLPTVWRENSGSYWCGAETVRGNIHKHSPSLQIH
VQRIPVSGVLLETQPSGGQAVEGEMLVLVCSVAEGTGDTTFSWHREDMQESLGRKTQRSLRAEELPAIR
QSHAGGYCTADNSYGPVQSMVLNVTVRETPGNRDGLVAAGATGGLLSALLLAVALLFHCWRRRKSGVGF
LGDETRLPPAPGPGESSHSICPAQVELQSLYVDVHPKKGDLVYSEIQTTLGEEEEANTSRTLLEDKDV
VYSEVKTQHPDNSAGKISSKDEES

TRTRPLEQKLISEEDLAANDILDYKDDDDKV

Tag:	C-Myc/DDK
Predicted MW:	55.2 kDa
Concentration:	>0.05 µg/µL as determined by microplate BCA method
Purity:	> 80% as determined by SDS-PAGE and Coomassie blue staining
Buffer:	25 mM Tris-HCl, 100 mM glycine, pH 7.3, 10% glycerol
Preparation:	Recombinant protein was captured through anti-DDK affinity column followed by conventional chromatography steps.
Note:	For testing in cell culture applications, please filter before use. Note that you may experience some loss of protein during the filtration process.
Storage:	Store at -80°C.
Stability:	Stable for 12 months from the date of receipt of the product under proper storage and handling conditions. Avoid repeated freeze-thaw cycles.



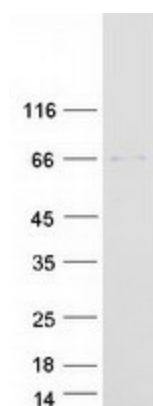
[View online >](#)

RefSeq:	NP_112572
Locus ID:	83417
UniProt ID:	Q96PJ5
RefSeq Size:	3459
Cytogenetics:	1q23.1
RefSeq ORF:	1545
Synonyms:	CD307d; FCRH4; IGFP2; IRTA1

Summary: This gene encodes a member of the immunoglobulin receptor superfamily and is one of several Fc receptor-like glycoproteins clustered on the long arm of chromosome 1. The encoded protein has four extracellular C2-type immunoglobulin domains, a transmembrane domain and a cytoplasmic domain that contains three immune-receptor tyrosine-based inhibitory motifs. This protein may play a role in the function of memory B-cells in the epithelia. Aberrations in the chromosomal region encoding this gene are associated with non-Hodgkin lymphoma and multiple myeloma. [provided by RefSeq, Apr 2009]

Protein Families: Transmembrane

Product images:



Coomassie blue staining of purified FCRL4 protein (Cat# [TP316335]). The protein was produced from HEK293T cells transfected with FCRL4 cDNA clone (Cat# [RC216335]) using MegaTran 2.0 (Cat# [TT210002]).