

Product datasheet for **TP316335**

FCRL4 (NM_031282) Human Recombinant Protein

Product data:

| | |
|---------------------------------------|--|
| Product Type: | Recombinant Proteins |
| Description: | Recombinant protein of human Fc receptor-like 4 (FCRL4), 20 µg |
| Species: | Human |
| Expression Host: | HEK293T |
| Expression cDNA Clone or AA Sequence: | >RC216335 representing NM_031282 Red =Cloning site Green =Tags(s) |

MLLWASLLAFAPVCGQSAAAHKPVISVHPPWTTFFKGERVTLTCNGFQFYATEKTTWYHQHYWGEKLTLT
PGNTLEVRESGLYRCQARGSPRSNPVRLLFSSDSLILQAPYSVFEGDTLVLRCHRRRKEKLTAVKYTWNG
NILSISNKSWDLLIPQASSNNNGNYRCIGYGDENDVFRSNFKIIKIQELFPHPELKATDSQPTEGNSVNL
SCETQLPPERSDTPHFNFRRDGEVILSDWSTYPELQLPTVWRENSGSYWCGAETVRGNIHKHSPSLQIH
VQRIPVSGVLLETQPSGGQAVEGEMLVLVCSVAEGTGDTTFSWHREDMQESLGRKTQRSLRAEELPAIR
QSHAGGYCTADNSYGPVQSMVLNVTVRETPGNRDGLVAAGATGGLLSALLLAVALLFHCWRRRKSGVGF
LGDETRLPPAPGPGESSHSICPAQVELQSLYVDVHPKKGDLVYSEIQTTLGEEEEANTSRTLLEDKDV
VYSEVKTQHPDNSAGKISSKDEES

TRTRPLEQKLISEEDLAANDILDYKDDDDKV

| | |
|----------------|--|
| Tag: | C-Myc/DDK |
| Predicted MW: | 55.2 kDa |
| Concentration: | >0.05 µg/µL as determined by microplate BCA method |
| Purity: | > 80% as determined by SDS-PAGE and Coomassie blue staining |
| Buffer: | 25 mM Tris-HCl, 100 mM glycine, pH 7.3, 10% glycerol |
| Preparation: | Recombinant protein was captured through anti-DDK affinity column followed by conventional chromatography steps. |
| Note: | For testing in cell culture applications, please filter before use. Note that you may experience some loss of protein during the filtration process. |
| Storage: | Store at -80°C. |
| Stability: | Stable for 12 months from the date of receipt of the product under proper storage and handling conditions. Avoid repeated freeze-thaw cycles. |



[View online »](#)

RefSeq: [NP_112572](#)

Locus ID: 83417

UniProt ID: [Q96PJ5](#)

RefSeq Size: 3459

Cytogenetics: 1q23.1

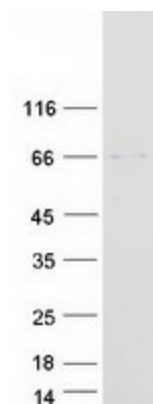
RefSeq ORF: 1545

Synonyms: CD307d; FCRH4; IGFP2; IRTA1

Summary: This gene encodes a member of the immunoglobulin receptor superfamily and is one of several Fc receptor-like glycoproteins clustered on the long arm of chromosome 1. The encoded protein has four extracellular C2-type immunoglobulin domains, a transmembrane domain and a cytoplasmic domain that contains three immune-receptor tyrosine-based inhibitory motifs. This protein may play a role in the function of memory B-cells in the epithelia. Aberrations in the chromosomal region encoding this gene are associated with non-Hodgkin lymphoma and multiple myeloma. [provided by RefSeq, Apr 2009]

Protein Families: Transmembrane

Product images:



Coomassie blue staining of purified FCRL4 protein (Cat# TP316335). The protein was produced from HEK293T cells transfected with FCRL4 cDNA clone (Cat# [RC216335]) using MegaTran 2.0 (Cat# [TT210002]).