

## Product datasheet for **TP316317**

### **CCBL1 (KYAT1) (NM\_004059) Human Recombinant Protein**

#### **Product data:**

<b>Product Type:</b>	Recombinant Proteins
<b>Description:</b>	Recombinant protein of human cysteine conjugate-beta lyase, cytoplasmic (CCBL1), transcript variant 1, 20 µg
<b>Species:</b>	Human
<b>Expression Host:</b>	HEK293T
<b>Expression cDNA Clone or AA Sequence:</b>	>RC216317 representing NM_004059 <b>Red</b> =Cloning site <b>Green</b> =Tags(s)

MAKQLQARRLDGIDYNPWVEFVKLASEHDVNLGQGFPDFPPPDFAVEAFQHAVSGDFMLNQYTKTFGYP  
PLTKILASFFGELLGQEIDPLRNVLTVGGYGALFTAFQALVDEGDEVIIIPEFFDCYEPMTMMAGGRP  
FVSLKPGPIQNGELGSSSNWQLDPMELAGKFTSRKALVLNTPNPLGKVFSSREEELVASLCQQHDVVC  
ITDEVYQWMVYDGHQHISIASLPGMWERTLTIGSAGKTF SATGWKVGWVLGPDHIMKHLRTVHQNSVFHC  
PTQSQAAVAESFEREQLLFRQPSSYFVQFPQAMQRCRDHMRSLQSVGLKPIIPQGSYFLITDISDFKRK  
MPDLPGAVDEPYDRRFVKWMIKNKGLVAIPVSIFYSVPHQKHFDHYIRFCVFKDEATLQAMDEKLRKWKV  
EL

**TRTRPLEQKLISEEDLAANDILDYKDDDDKV**

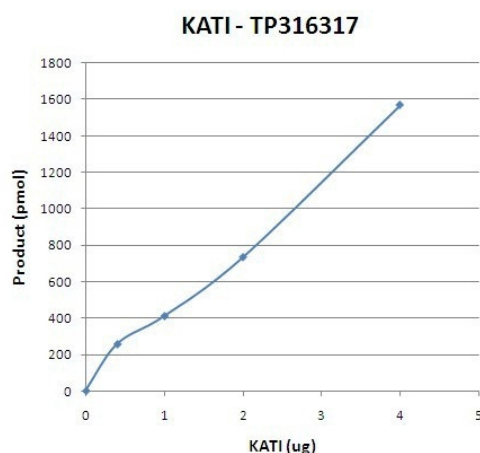
<b>Tag:</b>	C-Myc/DDK
<b>Predicted MW:</b>	47.7 kDa
<b>Concentration:</b>	>0.05 µg/µL as determined by microplate BCA method
<b>Purity:</b>	> 80% as determined by SDS-PAGE and Coomassie blue staining
<b>Buffer:</b>	25 mM Tris-HCl, 100 mM glycine, pH 7.3, 10% glycerol
<b>Bioactivity:</b>	The specific activity of KATI was determined by measuring the product Kynurenic acid formation from a conversion of Kynurenine. The reaction was carried out at 37° for 15min in the buffer containing 100 mM PBS, pH7.4, 2 mM α-oxoglutarate, 40µM PLP (pyridoxal 5'-phosphate), and 0.5 mM kynurenine as the substrate.
<b>Preparation:</b>	Recombinant protein was captured through anti-DDK affinity column followed by conventional chromatography steps.
<b>Note:</b>	For testing in cell culture applications, please filter before use. Note that you may experience some loss of protein during the filtration process.

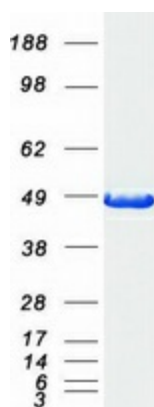


[View online »](#)

<b>Storage:</b>	Store at -80°C.
<b>Stability:</b>	Stable for 12 months from the date of receipt of the product under proper storage and handling conditions. Avoid repeated freeze-thaw cycles.
<b>RefSeq:</b>	<u>NP_004050</u>
<b>Locus ID:</b>	883
<b>UniProt ID:</b>	<u>Q16773</u> , <u>A8K563</u>
<b>RefSeq Size:</b>	1925
<b>Cytogenetics:</b>	9q34.11
<b>RefSeq ORF:</b>	1266
<b>Synonyms:</b>	CCBL1; GTK; KAT1; KATI
<b>Summary:</b>	This gene encodes a cytosolic enzyme that is responsible for the metabolism of cysteine conjugates of certain halogenated alkenes and alkanes. This metabolism can form reactive metabolites leading to nephrotoxicity and neurotoxicity. Increased levels of this enzyme have been linked to schizophrenia. Multiple transcript variants that encode different isoforms have been identified for this gene. [provided by RefSeq, Jul 2008]

## Product images:





Coomassie blue staining of purified KYAT1 protein (Cat# TP316317). The protein was produced from HEK293T cells transfected with KYAT1 cDNA clone (Cat# [RC216317]) using MegaTran 2.0 (Cat# [TT210002]).