

Product datasheet for TP316303M

RAB6B (NM_016577) Human Recombinant Protein

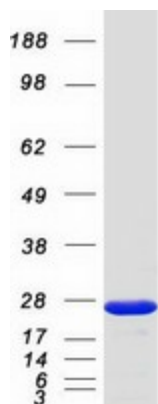
Product data:

Product Type:	Recombinant Proteins
Description:	Recombinant protein of human RAB6B, member RAS oncogene family (RAB6B), 100 µg
Species:	Human
Expression Host:	HEK293T
Expression cDNA Clone or AA Sequence:	>RC216303 representing NM_016577 <div> <div>Red</div>=Cloning site <div>Green</div>=Tags(s) </div> <p>MSAGGDFGNPLRKFKLVFLGEQSVGKTSLITRFMYDSFDNTYQATIGIDFLSKTMYLEDRTVRLQLWDTA GQERFRSLIPSYIRDSTVAVVVYDITNLNSFQQTSKWIDDVRTERGSDVIIMLVGNKTDLADKRQITIEE GEQRAKELSVMIETSAKTGYNVKQLFRRVASALPGMENVQEKSKEGMIDIKLDPQEPPASEGGCSC</p> <p><div>TR</div><div>TRPLEQKLISEEDLA</div><div>ANDILDYKDDDDKV</div></p>
Tag:	C-Myc/DDK
Predicted MW:	23.3 kDa
Concentration:	>0.05 µg/µL as determined by microplate BCA method
Purity:	> 80% as determined by SDS-PAGE and Coomassie blue staining
Buffer:	25 mM Tris-HCl, 100 mM glycine, pH 7.3, 10% glycerol
Preparation:	Recombinant protein was captured through anti-DDK affinity column followed by conventional chromatography steps.
Note:	For testing in cell culture applications, please filter before use. Note that you may experience some loss of protein during the filtration process.
Storage:	Store at -80°C.
Stability:	Stable for 12 months from the date of receipt of the product under proper storage and handling conditions. Avoid repeated freeze-thaw cycles.
RefSeq:	NP_057661
Locus ID:	51560
UniProt ID:	Q9NRW1
RefSeq Size:	5561


[View online »](#)

Cytogenetics:	3q22.1
RefSeq ORF:	624
Summary:	Seems to have a role in retrograde membrane traffic at the level of the Golgi complex. May function in retrograde transport in neuronal cells.[UniProtKB/Swiss-Prot Function]
Protein Families:	Druggable Genome

Product images:



Coomassie blue staining of purified RAB6B protein (Cat# [TP316303]). The protein was produced from HEK293T cells transfected with RAB6B cDNA clone (Cat# [RC216303]) using MegaTran 2.0 (Cat# [TT210002]).