

## Product datasheet for **TP316301**

### **GALP (NM\_033106) Human Recombinant Protein**

#### Product data:

Product Type:	Recombinant Proteins
Description:	Recombinant protein of human galanin-like peptide (GALP), transcript variant 1, 20 µg
Species:	Human
Expression Host:	HEK293T
Expression cDNA Clone or AA Sequence:	>RC216301 representing NM_033106 <b>Red</b> =Cloning site <b>Green</b> =Tags(s)
	MAPPSVPLVLLLVLALLSLAETPASAPAHGRGGWTLNSAGYLLGPVLHLPQMGDQDGKRETALEILDWLK AIDGLPYSHPPQPSKRNVMETFAKPEIGDLGMLSMKIPKEEDVLKS
	<b>TR</b> TRPLE <b>QKLISEEDLA</b> ANDILDYKDDDDKV
Tag:	C-Myc/DDK
Predicted MW:	12.4 kDa
Concentration:	>0.05 µg/µL as determined by microplate BCA method
Purity:	> 80% as determined by SDS-PAGE and Coomassie blue staining
Buffer:	25 mM Tris-HCl, 100 mM glycine, pH 7.3, 10% glycerol
Preparation:	Recombinant protein was captured through anti-DDK affinity column followed by conventional chromatography steps.
Note:	For testing in cell culture applications, please filter before use. Note that you may experience some loss of protein during the filtration process.
Storage:	Store at -80°C.
Stability:	Stable for 12 months from the date of receipt of the product under proper storage and handling conditions. Avoid repeated freeze-thaw cycles.
RefSeq:	<a href="#">NP_149097</a>
Locus ID:	85569
UniProt ID:	<a href="#">Q9UBC7</a>
RefSeq Size:	947
Cytogenetics:	19q13.43



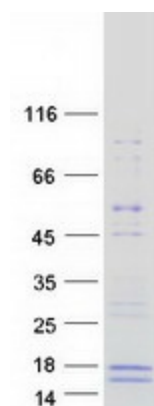
[View online »](#)

RefSeq ORF: 348

**Summary:** This gene encodes a member of the galanin family of neuropeptides. The encoded protein binds galanin receptors 1, 2 and 3 with the highest affinity for galanin receptor 3 and has been implicated in biological processes involving the central nervous system including hypothalamic regulation of metabolism and reproduction. A peptide encoded by a splice variant of this gene, termed alarin, has vasoactive properties, displays antimicrobial activity against *E. coli*, and may serve as a marker for neuroblastic tumors.[provided by RefSeq, Nov 2014]

**Protein Families:** Secreted Protein

### Product images:



Coomassie blue staining of purified GALP protein (Cat# TP316301). The protein was produced from HEK293T cells transfected with GALP cDNA clone (Cat# [RC216301]) using MegaTran 2.0 (Cat# [TT210002]).