

Product datasheet for TP316299

RASSF2 (NM_014737) Human Recombinant Protein

Product data:

Product Type:	Recombinant Proteins
Description:	Recombinant protein of human Ras association (RalGDS/AF-6) domain family member 2 (RASSF2), transcript variant 1, 20 µg
Species:	Human
Expression Host:	HEK293T
Expression cDNA Clone or AA Sequence:	>RC216299 representing NM_014737 Red=Cloning site Green=Tags(s)

MDYSHQTSLVPCGQDKYISKNEILLHLKTYNLYYEGQNLQLRHREEEDEFIVEGLLNISWGLRRPIRLQM
QDDNERIRPPSSSSWHSGCNLGAQGTTLPLTPVKVQISEVDAPPEGDQMPSSSTDSRGLKPLQEDTPQL
MRTRSDVGVRRRGNVRTPSDQRRIRRHRSINGHFYNHKTSVFTPAYGSVTNVRINSTMTTPQVLKLLL
KFKIENSAEEFALYVVHTSGEKQKLDYPLIARILQGPCEQISKVFLMEKDQVEEVTYDVAQYIKFEM
PVLKSFQKLQEEEDREVKKLMRKYTVLRLMIRQRLEEIAETPATI

TRTRPLEQKLISEEDLAANDILDYKDDDDKV

Tag:	C-Myc/DDK
Predicted MW:	37.6 kDa
Concentration:	>0.05 µg/µL as determined by microplate BCA method
Purity:	> 80% as determined by SDS-PAGE and Coomassie blue staining
Buffer:	25 mM Tris-HCl, 100 mM glycine, pH 7.3, 10% glycerol
Preparation:	Recombinant protein was captured through anti-DDK affinity column followed by conventional chromatography steps.
Note:	For testing in cell culture applications, please filter before use. Note that you may experience some loss of protein during the filtration process.
Storage:	Store at -80°C.
Stability:	Stable for 12 months from the date of receipt of the product under proper storage and handling conditions. Avoid repeated freeze-thaw cycles.
RefSeq:	NP_055552
Locus ID:	9770



[View online »](#)

UniProt ID: [P50749](#)

RefSeq Size: 5426

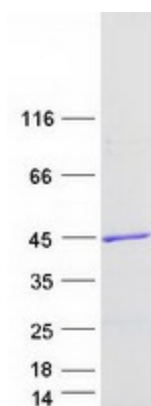
Cytogenetics: 20p13

RefSeq ORF: 978

Synonyms: CENP-34; RASFADIN

Summary: This gene encodes a protein that contains a Ras association domain. Similar to its cattle and sheep counterparts, this gene is located near the prion gene. Two alternatively spliced transcripts encoding the same isoform have been reported. [provided by RefSeq, Jul 2008]

Product images:



Coomassie blue staining of purified RASSF2 protein (Cat# TP316299). The protein was produced from HEK293T cells transfected with RASSF2 cDNA clone (Cat# [RC216299]) using MegaTran 2.0 (Cat# [TT210002]).