

Product datasheet for **TP316285M**

NY-ESO-1 (CTAG1A) (NM_139250) Human Recombinant Protein

Product data:

Product Type: Recombinant Proteins

Description: Recombinant protein of human cancer/testis antigen 1A (CTAG1A), 100 µg

Species: Human

Expression Host: HEK293T

Expression cDNA >RC216285 protein sequence

Clone or AA **Red**=Cloning site **Green**=Tags(s)

Sequence:

MQAEGRGTGGSTGDADGPGGPGIPDGPGGNAGGPGEAGATGGRGPRGAGAARASGPGGGAPRGPHGGAAS
GLNGCCRCGARGPESRLLLEFYLAMPFATPMEAEARRSLAQDAPPLPVPGVLLKEFTVSGNILTIRLTAA
DHRQLQLSISSCLQLSLLMWITQCFLPVFLAQPPSGQRR

TRTRPLEQKLISEEDLAANDILDYKDDDDKV

Tag: C-Myc/DDK

Predicted MW: 17.8 kDa

Concentration: >0.05 µg/µL as determined by microplate BCA method

Purity: > 80% as determined by SDS-PAGE and Coomassie blue staining

Buffer: 25 mM Tris-HCl, 100 mM glycine, pH 7.3, 10% glycerol

Preparation: Recombinant protein was captured through anti-DDK affinity column followed by conventional chromatography steps.

Note: For testing in cell culture applications, please filter before use. Note that you may experience some loss of protein during the filtration process.

Storage: Store at -80°C.

Stability: Stable for 12 months from the date of receipt of the product under proper storage and handling conditions. Avoid repeated freeze-thaw cycles.

RefSeq: [NP_640343](#)

Locus ID: 246100

UniProt ID: [P78358](#)

RefSeq Size: 748



[View online »](#)

Cytogenetics: Xq28

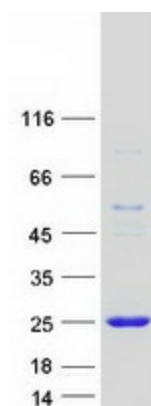
RefSeq ORF: 540

Synonyms: CT6.1; ESO1; LAGE-2; LAGE2A; NY-ESO-1

Summary: The protein encoded by this gene is a tumor cell antigen found in various types of cancers, which makes it a good candidate for a cancer vaccine. This gene is also highly expressed in normal ovary and testis tissues. An identical copy of this gene is found on the same chromosome. [provided by RefSeq, Dec 2015]

Protein Families: Druggable Genome

Product images:



Coomassie blue staining of purified CTAG1A protein (Cat# [TP316285]). The protein was produced from HEK293T cells transfected with CTAG1A cDNA clone (Cat# [RC216285]) using MegaTran 2.0 (Cat# [TT210002]).