

## Product datasheet for **TP316285L**

### NY-ESO-1 (CTAG1A) (NM\_139250) Human Recombinant Protein

#### Product data:

**Product Type:** Recombinant Proteins

**Description:** Recombinant protein of human cancer/testis antigen 1A (CTAG1A), 1 mg

**Species:** Human

**Expression Host:** HEK293T

**Expression cDNA** >RC216285 protein sequence

**Clone or AA** **Red**=Cloning site **Green**=Tags(s)

**Sequence:**

MQAEGRGTGGSTGDADGPGGPGIPDGPGGNAGGPGEAGATGGRGPRGAGAARASGPGGGAPRGPHGGAAS  
GLNGCCRCGARGPESRLLEFYLAMPFATPMEAEARRSLAQDAPPLVPGVLLKEFTVSGNILTIRLTAA  
DHRQLQLSISSCLQLSLLMWITQCFLPVFLAQPPSGQRR

**TRTRPLEQKLISEEDLAANDILDYKDDDDKV**

**Tag:** C-Myc/DDK

**Predicted MW:** 17.8 kDa

**Concentration:** >0.05 µg/µL as determined by microplate BCA method

**Purity:** > 80% as determined by SDS-PAGE and Coomassie blue staining

**Buffer:** 25 mM Tris-HCl, 100 mM glycine, pH 7.3, 10% glycerol

**Preparation:** Recombinant protein was captured through anti-DDK affinity column followed by conventional chromatography steps.

**Note:** For testing in cell culture applications, please filter before use. Note that you may experience some loss of protein during the filtration process.

**Storage:** Store at -80°C.

**Stability:** Stable for 12 months from the date of receipt of the product under proper storage and handling conditions. Avoid repeated freeze-thaw cycles.

**RefSeq:** [NP\\_640343](#)

**Locus ID:** 246100

**UniProt ID:** [P78358](#)

**RefSeq Size:** 748



[View online »](#)

Cytogenetics: Xq28

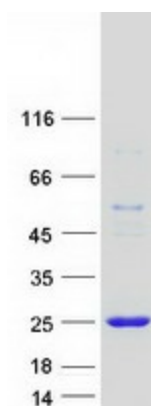
RefSeq ORF: 540

Synonyms: CT6.1; ESO1; LAGE-2; LAGE2A; NY-ESO-1

**Summary:** The protein encoded by this gene is a tumor cell antigen found in various types of cancers, which makes it a good candidate for a cancer vaccine. This gene is also highly expressed in normal ovary and testis tissues. An identical copy of this gene is found on the same chromosome. [provided by RefSeq, Dec 2015]

Protein Families: Druggable Genome

### Product images:



Coomassie blue staining of purified CTAG1A protein (Cat# [TP316285]). The protein was produced from HEK293T cells transfected with CTAG1A cDNA clone (Cat# [RC216285]) using MegaTran 2.0 (Cat# [TT210002]).