

Product datasheet for **TP316256M**

PRR16 (NM_016644) Human Recombinant Protein

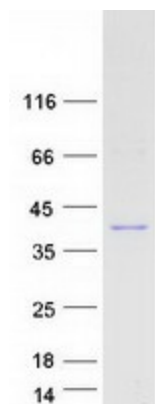
Product data:

Product Type:	Recombinant Proteins
Description:	Recombinant protein of human proline rich 16 (PRR16), 100 µg
Species:	Human
Expression Host:	HEK293T
Expression cDNA Clone or AA Sequence:	>RC216256 representing NM_016644 Red =Cloning site Green =Tags(s) MAQSGLTATSASQVQAILLPQPASVRHYAWVVDQIDTLTSDLQLEDEMTDSSKTDLTNSSSSGTTASSLE KIKVQANAPLIKPPAHPSAILTVLRKPNPPPPPPRLTPVKCEDPKRVVPTANPVKTNGTLLRNGGLPGGP NKIPNGDICCIPNSNLDKAPVQLLMHRPEKDRCPQAGPRERVRFNEKVQYHGYCPDCDTRYNIKNREVV L HSEPVHPPGKIPHQGPPLPPTPHLPPFPLENGGMGISHSNSFPPIRPATVPPPTAPKPQKTILRKSTTTT V TRTRPLEQKLISEEDLAANDILDYKDDDDKV
Tag:	C-Myc/DDK
Predicted MW:	30.2 kDa
Concentration:	>0.05 µg/µL as determined by microplate BCA method
Purity:	> 80% as determined by SDS-PAGE and Coomassie blue staining
Buffer:	25 mM Tris-HCl, 100 mM glycine, pH 7.3, 10% glycerol
Preparation:	Recombinant protein was captured through anti-DDK affinity column followed by conventional chromatography steps.
Note:	For testing in cell culture applications, please filter before use. Note that you may experience some loss of protein during the filtration process.
Storage:	Store at -80°C.
Stability:	Stable for 12 months from the date of receipt of the product under proper storage and handling conditions. Avoid repeated freeze-thaw cycles.
RefSeq:	<u>NP_057728</u>
Locus ID:	51334


[View online »](#)

UniProt ID:	<u>Q569H4</u>
RefSeq Size:	1798
Cytogenetics:	5q23.1
RefSeq ORF:	843
Synonyms:	DSC54; LARGEN
Summary:	Regulator of cell size that promotes cell size increase independently of mTOR and Hippo signaling pathways. Acts by stimulating the translation of specific mRNAs, including those encoding proteins affecting mitochondrial functions. Increases mitochondrial mass and respiration.[UniProtKB/Swiss-Prot Function]

Product images:



Coomassie blue staining of purified PRR16 protein (Cat# [TP316256]). The protein was produced from HEK293T cells transfected with PRR16 cDNA clone (Cat# [RC216256]) using MegaTran 2.0 (Cat# [TT210002]).