

Product datasheet for TP316227M

Matrilin 2 (MATN2) (NM_002380) Human Recombinant Protein

Product data:

Product Type:	Recombinant Proteins
Description:	Recombinant protein of human matrilin 2 (MATN2), transcript variant 1, 100 µg
Species:	Human
Expression Host:	HEK293T
Expression cDNA	>RC216227 representing NM_002380
Clone or AA Sequence:	Red=Cloning site Green=Tags(s)

MEKMLAGCFLILGQIVLLPAEARERSRGRSISRGRHARTHHPQTALLESSCENKRADLVFIIDSSRSVNT
 HDYAKVKEFIVDILQFLDIGPDVTRVGLLQYGSTVKNEFSCLKTFKRKSEVERAVKRMRLSTGTMTGLAI
 QYALNIAFSEAEGARPLRENVPRVIMIVTDGRPQDSVAEVAAKARDTGILIFAIGVGQVDFNTLKSIGSE
 PHEDHVFLVANFSQIETLTSVFQKKLCTAHMCSTLEHNCAHFCINIPGSYVCRCKQGYILNSDQTTCRIQ
 DLCAMEDHNCEQLCVNVPGSFVCQCYSGYALAEDGKRCVAVDYCASENHGCEHECVNADGSYLCQCHEGF
 ALNPDEKTCTKIDYCASSNHGCQHECVNTDDSYSCHCLKGFTLNPDKKTCRRINYCALNKPGEHECVNM
 EESYRCRCHRGYTLDPNGKTC SRVDHCAQQDHGCEQLCLNTEDSFVCQCSEGLINEDLKTCSRVDYCLL
 SDHGCEYSCVNMDRSFACQCEGHVLRSDGKCAKLDSCALGDHGCHEHSCVSSSEDSFVCQCFEGYILRED
 GKTCRRKDVCQAIDHGCEHICVNSDDSYTCECLEGFRLTEDGKRCRRKDVCKSTHHGCEHICVNNGNSYI
 CKCSEGFLAEDGRRCKKCTEGPIDLVFVIDGSKSLGEENFEVVKQFVTGIIDSLTISPKAARVGLLQYS
 TQVHTEFTLRNFNSAKDMKKAVAHMKYMKGKSMGLALKHMFERSFTQGEGARPLSTRVPRAAIVFTDGR
 AQDDVSEWASKAKANGITMYAVGVGKAIEEELQEIASEPTNKHLFYAEDFSTMDEISEKLLKGICEALED
 SDGRQDSPAGELPKMVQQPTESEPVITINIQDLLSCSNFAVQHRYLFEEDNLLRSTQKLSHSTKPSGSPLE
 EKHDQCKCENLIMFQNLANEEVRKLTQRLEEMTQRMEALENRLRYR

TRTRPLEQKLISEEDLAANDILDYKDDDDKV

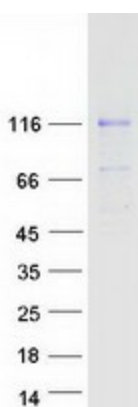
Tag:	C-Myc/DDK
Predicted MW:	104.3 kDa
Concentration:	>0.05 µg/µL as determined by microplate BCA method
Purity:	> 80% as determined by SDS-PAGE and Coomassie blue staining
Buffer:	25 mM Tris-HCl, 100 mM glycine, pH 7.3, 10% glycerol
Preparation:	Recombinant protein was captured through anti-DDK affinity column followed by conventional chromatography steps.



[View online »](#)

Note:	For testing in cell culture applications, please filter before use. Note that you may experience some loss of protein during the filtration process.
Storage:	Store at -80°C.
Stability:	Stable for 12 months from the date of receipt of the product under proper storage and handling conditions. Avoid repeated freeze-thaw cycles.
RefSeq:	NP_002371
Locus ID:	4147
UniProt ID:	O00339 , A0A140VKHZ , Q8N2G3
RefSeq Size:	4122
Cytogenetics:	8q22.1-q22.2
RefSeq ORF:	2868
Summary:	This gene encodes a member of the von Willebrand factor A domain containing protein family. This family of proteins is thought to be involved in the formation of filamentous networks in the extracellular matrices of various tissues. This protein contains five von Willebrand factor A domains. The specific function of this gene has not yet been determined. Two transcript variants encoding different isoforms have been found for this gene. [provided by RefSeq, Jul 2008]
Protein Families:	Secreted Protein

Product images:



Coomassie blue staining of purified MATN2 protein (Cat# [TP316227]). The protein was produced from HEK293T cells transfected with MATN2 cDNA clone (Cat# [RC216227]) using MegaTran 2.0 (Cat# [TT210002]).