

Product datasheet for TP316226M

IGF2BP1 (NM_006546) Human Recombinant Protein

Product data:

Product Type:	Recombinant Proteins
Description:	Recombinant protein of human insulin-like growth factor 2 mRNA binding protein 1 (IGF2BP1), 100 µg
Species:	Human
Expression Host:	HEK293T
Expression cDNA Clone or AA Sequence:	>RC216226 representing NM_006546 Red=Cloning site Green=Tags(s)

MNKLYIGNLNESVTPADLEKVFAEHKISYSGQLVKSGYAFVDCPDEHWAMKAIETFSGKVELQGKRLEI
EHSVPPKQRSRKIQIRNIPPQLRWEVLDSLLAQYGTVENCEQVNTSEAVNVVNTYSNREQTRQAIMKLN
GHQLENHALKVSYPDEQIAQGPENGRGGFGSRGQPRQGSPVAAGAPAKQQQVDIPLRLLVPTQYVGA
IGKEGATIRNITKQTQSKIDVHRKENAGAAEKASVHSTPEGSSACKMILEIMHKEAKDTKTAADEVPLK
ILAHNNFVGRLLIGKEGRNLKKVEQDTETKITISSLQDLTYNPERTITVKGAIENCCRAEQEIMKKVREA
YENDVAAMSLQSHLIPGLNLAAGVLPASSAVPPPPSSVTGAAPYSSFMQAPEQEMVQVFIPAQAVGAI
IGKKGQHIKQLSRFASASIKIAPPETPDSKVRMVIITGPPEAQFKAQGRIYGKLKEENFFGPKKEEVKLET
HIRVPASAAGRVIKGGKTVNELQNLTAEEVVPRDQTPDENDQVIVKIIGHFYASQMAQRKIRDILAQV
KQQHQKQGSNQAQARRK

TRTRPLEQKLISEEDLAANDILDYKDDDDKV

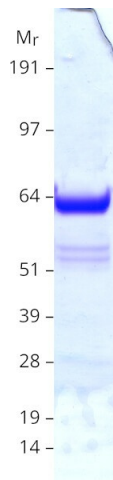
Tag:	C-Myc/DDK
Predicted MW:	63.3 kDa
Concentration:	>0.05 µg/µL as determined by microplate BCA method
Purity:	> 80% as determined by SDS-PAGE and Coomassie blue staining
Buffer:	25 mM Tris-HCl, 100 mM glycine, pH 7.3, 10% glycerol
Bioactivity:	EMSA assay (PMID: 27068461)
Preparation:	Recombinant protein was captured through anti-DDK affinity column followed by conventional chromatography steps.
Note:	For testing in cell culture applications, please filter before use. Note that you may experience some loss of protein during the filtration process.



[View online »](#)

Storage:	Store at -80°C.
Stability:	Stable for 12 months from the date of receipt of the product under proper storage and handling conditions. Avoid repeated freeze-thaw cycles.
RefSeq:	NP_006537
Locus ID:	10642
UniProt ID:	Q9NZI8
RefSeq Size:	8769
Cytogenetics:	17q21.32
RefSeq ORF:	1731
Synonyms:	CRD-BP; CRDBP; IMP-1; IMP1; VICKZ1; ZBP1
Summary:	This gene encodes a member of the insulin-like growth factor 2 mRNA-binding protein family. The protein encoded by this gene contains four K homology domains and two RNA recognition motifs. It functions by binding to the mRNAs of certain genes, including insulin-like growth factor 2, beta-actin and beta-transducin repeat-containing protein, and regulating their translation. Two transcript variants encoding different isoforms have been found for this gene. [provided by RefSeq, May 2009]

Product images:



Coomassie blue staining of purified IGF2BP1 protein (Cat# [TP316226]). The protein was produced from HEK293T cells transfected with IGF2BP1 cDNA clone (Cat# [RC216226]) using MegaTran 2.0 (Cat# [TT210002]).