

## Product datasheet for TP316226L

### IGF2BP1 (NM\_006546) Human Recombinant Protein

#### Product data:

Product Type:	Recombinant Proteins
Description:	Recombinant protein of human insulin-like growth factor 2 mRNA binding protein 1 (IGF2BP1), 1 mg
Species:	Human
Expression Host:	HEK293T
Expression cDNA Clone or AA Sequence:	>RC216226 representing NM_006546 <b>Red</b> =Cloning site <b>Green</b> =Tags(s)

MNKLYIGNLNESVTPADLEKVFAEHKISYSGQFLVKSGYAFVDCPDEHWAMKAIETFSGKVELQGKRLEI  
EHSVPPKQRSRKIQIRNIPPQLRWEVLDSLLAQYGTVENCEQVNTSEAVNVNVTYSNREQTRQAIMKLN  
GHQLENHALKVSYPDEQIAQGPENGRGGFGSRGQPRQGSPVAAGAPAKQQQVDIPLRLLVPTQYVGA  
IGKEGATIRNITKQTQSKIDVHRKENAGAAEKASVHSTPEGSSACKMILEIMHKEAKDTKTAADEVPLK  
ILAHNNFVGRLLIGKEGRNLKKVEQDTETKITISSLQDLTYNPERTITVKGAIENCCRAEQEIMKKVREA  
YENDVAAMSLQSHLIPGLNLAAGVLFPAASSAVPPPPSSVTGAAPYSSFMQAPEQEMVQVFIPAQAVGAI  
IGKKGQHIKQLSRFASASIKIAPPETPDSKVRMVIITGPPEAQFKAQGRIYGKLKEENFFGPKKEEVKLET  
HIRVPASAAGRVIKGGKTVNELQNLTAEEVVPRDQTPDENDQVIVKIIGHFYASQMAQRKIRDILAQV  
KQQHQKQGSNQAQARRK

**TRTRPLEQKLISEEDLAANDILDYKDDDDKV**

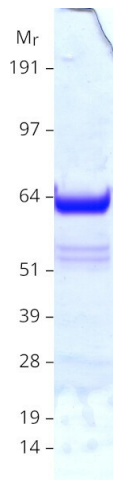
Tag:	C-Myc/DDK
Predicted MW:	63.3 kDa
Concentration:	>0.05 µg/µL as determined by microplate BCA method
Purity:	> 80% as determined by SDS-PAGE and Coomassie blue staining
Buffer:	25 mM Tris-HCl, 100 mM glycine, pH 7.3, 10% glycerol
Bioactivity:	EMSA assay (PMID: <a href="#">27068461</a> )
Preparation:	Recombinant protein was captured through anti-DDK affinity column followed by conventional chromatography steps.
Note:	For testing in cell culture applications, please filter before use. Note that you may experience some loss of protein during the filtration process.



[View online »](#)

<b>Storage:</b>	Store at -80°C.
<b>Stability:</b>	Stable for 12 months from the date of receipt of the product under proper storage and handling conditions. Avoid repeated freeze-thaw cycles.
<b>RefSeq:</b>	<a href="#">NP_006537</a>
<b>Locus ID:</b>	10642
<b>UniProt ID:</b>	<a href="#">Q9NZI8</a>
<b>RefSeq Size:</b>	8769
<b>Cytogenetics:</b>	17q21.32
<b>RefSeq ORF:</b>	1731
<b>Synonyms:</b>	CRD-BP; CRDBP; IMP-1; IMP1; VICKZ1; ZBP1
<b>Summary:</b>	This gene encodes a member of the insulin-like growth factor 2 mRNA-binding protein family. The protein encoded by this gene contains four K homology domains and two RNA recognition motifs. It functions by binding to the mRNAs of certain genes, including insulin-like growth factor 2, beta-actin and beta-transducin repeat-containing protein, and regulating their translation. Two transcript variants encoding different isoforms have been found for this gene. [provided by RefSeq, May 2009]

### Product images:



Coomassie blue staining of purified IGF2BP1 protein (Cat# [TP316226]). The protein was produced from HEK293T cells transfected with IGF2BP1 cDNA clone (Cat# [RC216226]) using MegaTran 2.0 (Cat# [TT210002]).