

## Product datasheet for **TP316211L**

### WHAMM (NM\_001080435) Human Recombinant Protein

#### Product data:

**Product Type:** Recombinant Proteins

**Description:** Recombinant protein of human WAS protein homolog associated with actin, golgi membranes and microtubules (WHAMM), 1 mg

**Species:** Human

**Expression Host:** HEK293T

**Expression cDNA Clone or AA Sequence:** >RC216211 representing NM\_001080435  
**Red**=Cloning site **Green**=Tags(s)

MEDEQPDSLEGWVPVREGLFAEPERHRLRFLVAWNGAEGKFAVTCHDRTAQQRRRLREGARLGPEPEPKP  
E  
AAVSPSSWAGLLSAAGLRGAHRQLAALWPPLERCFPRLPPELDVGGGGAWGLGLGLWALLWPTRAGPG  
EA  
ALQELCGQLERYLGAAADGCGGATVRDALFPAEGGAADCESPREFRERALARWVEADARLRQVIQGHGK  
ANTMVALMNVYQEEDEAYQELVTVATMFFQYLLQPFRAMREVATLCKLDILKSLDEDDLGP RRVVVALEKE  
AAEWTRRAEEAVVSIQDITVNYFKETVKALAGMQKEME QDAKRFGQA AWATAIPRLEKLQLMLARETLQL  
MRAKELCLNHKRAEIQGKMEDLPEQEKNNTNVVDELEIQFYEIQLELYEVKFEILKNEEILLTTQLDSLKR  
LIKEKQDEVVYDPCENPEELKVIDCVGLQDDKNLEVKE LRRQCQQLESKRGRICAKRASLSRKDQCK  
ENHRFRLQQAESIRYSRQHHSIQMKRDKIEEEEQKKKEWINQERQKTLQRLRSFKDKRLAQSVRNTSGS  
EPVAPNLPDLSQQMCLPASHAVSVIHPSSRKTRGVPLSEAGNVKSPKCQNCHGNIPVQVFPVGDQTH  
S  
KSSEELSLPPPPPPPPPPPPPPPPPPPLRALSSSSQAATHQNLGFRAPVKDDQPRPLVCESPAERPRDS  
LESFSCPGSMDEVLASLRHGRAPLRKVEVPAVRPPHASINEHILAAIRQGVLKLVHPDLGPNPSSKPTS  
NRRTSDLERSIKAALQRIKRV SADSEEDSDEQDPGQWDG

**TRTRPLEQKLISEEDLAANDILDYKDDDDKV**

**Tag:** C-Myc/DDK

**Predicted MW:** 90.7 kDa

**Concentration:** >0.05 µg/µL as determined by microplate BCA method

**Purity:** > 80% as determined by SDS-PAGE and Coomassie blue staining

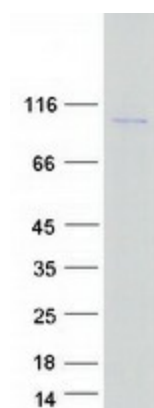
**Buffer:** 25 mM Tris-HCl, 100 mM glycine, pH 7.3, 10% glycerol



[View online »](#)

<b>Preparation:</b>	Recombinant protein was captured through anti-DDK affinity column followed by conventional chromatography steps.
<b>Note:</b>	For testing in cell culture applications, please filter before use. Note that you may experience some loss of protein during the filtration process.
<b>Storage:</b>	Store at -80°C.
<b>Stability:</b>	Stable for 12 months from the date of receipt of the product under proper storage and handling conditions. Avoid repeated freeze-thaw cycles.
<b>RefSeq:</b>	<u><a href="#">NP_001073904</a></u>
<b>Locus ID:</b>	123720
<b>UniProt ID:</b>	<u><a href="#">Q8TF30</a></u>
<b>RefSeq Size:</b>	4261
<b>Cytogenetics:</b>	15q25.2
<b>RefSeq ORF:</b>	2427
<b>Synonyms:</b>	WHAMM1; WHDC1
<b>Summary:</b>	This gene encodes a protein that plays a role in actin nucleation, Golgi membrane association and microtubule binding. The encoded protein is a nucleation-promoting factor that regulates the Actin-related protein 2/3 complex. The activated complex initiates growth of new actin filaments by binding to existing actin filaments. The encoded protein also functions in regulation of transport from the endoplasmic reticulum to the Golgi complex and in maintenance of the Golgi complex near the centrosome. Four pseudogenes of this gene are present on the same arm of chromosome 15 as this gene. [provided by RefSeq, Aug 2013]

## Product images:



Coomassie blue staining of purified WHAMM protein (Cat# [TP316211]). The protein was produced from HEK293T cells transfected with WHAMM cDNA clone (Cat# [RC216211]) using MegaTran 2.0 (Cat# [TT210002]).