

## Product datasheet for TP316211

### WHAMM (NM\_001080435) Human Recombinant Protein

#### Product data:

Product Type:	Recombinant Proteins
Description:	Recombinant protein of human WAS protein homolog associated with actin, golgi membranes and microtubules (WHAMM), 20 µg
Species:	Human
Expression Host:	HEK293T
Expression cDNA Clone or AA Sequence:	>RC216211 representing NM_001080435 Red=Cloning site Green=Tags(s)

MEDEQPDSLEGWVPVREGLFAEPERHRLRFLVAWNGAEGKFAVTCHDRTAQQRRLREGARLGPEPEPKPE  
AAVSPSSWAGLLSAAGLRGAHRQLAALWPPLERCFPRLPPELDVGGGGAWGLGLLWALLWPTRAGPGEA  
ALQELCGQLERYLGAAADGCGGATVRDALFPAEGGAADCESPREFRERALARWVEADARLRQVIQGHGK  
ANTMVALMNVYQEEDEAYQELVTVATMFFQYLLQPFAMREVATLCKLDILKSLDEDDLGP RRVALEKE  
AEEWTRRAEEAVSIQDITVNYFKETVKALAGMQKEMEQDAKRFQAAWATAIPRLEKLQLMLARETLQL  
MRAKELCLNHKRAEIQGKMEDLPEQEKNNTNVDELEIQFYEIQLELYEVKFEILKNEEILLTTQLDSLKR  
LIKEKQDEVVYDPCENPEELKVIDCVGLQDDKNLEVKELRRQCQQLSKRGRICAKRASLSRDKDQCK  
ENHRFRLQQAEE SIRYSRQHHSIQMKRDKIKEEEQKKKEWINQERQKTLQRLRSFKDKRLAQSVRNTSGS  
EPVAPNLPDLSQQMCLPASHAVSVIHPSSRKTRGVPLSEAGNVKSPKCQNC HGNIPVQVFVPGDQTHS  
KSSEELSLPPPPPPPPPPPPPPPPPPPLRALSSSSQAATHQNLGFRAPVKDDQPRPLVCESPAERPRDS  
LESFSCPGSMDEVLASLRHGRAPLRKVEVPAVRPPHASEHILAAIRQGVKLLKVPDLGPNPSSKPTS  
NRRTSDLERSIKAALQRIKRVSA DSEEDSDEQDPGQWDG

TRTRPLEQKLISEEDLAANDILDYKDDDDKV

Tag:	C-Myc/DDK
Predicted MW:	90.7 kDa
Concentration:	>0.05 µg/µL as determined by microplate BCA method
Purity:	> 80% as determined by SDS-PAGE and Coomassie blue staining
Buffer:	25 mM Tris-HCl, 100 mM glycine, pH 7.3, 10% glycerol
Preparation:	Recombinant protein was captured through anti-DDK affinity column followed by conventional chromatography steps.



[View online »](#)

**Note:** For testing in cell culture applications, please filter before use. Note that you may experience some loss of protein during the filtration process.

**Storage:** Store at -80°C.

**Stability:** Stable for 12 months from the date of receipt of the product under proper storage and handling conditions. Avoid repeated freeze-thaw cycles.

**RefSeq:** [NP\\_001073904](#)

**Locus ID:** 123720

**UniProt ID:** [Q8TF30](#)

**RefSeq Size:** 4261

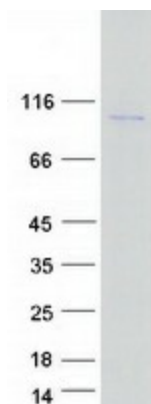
**Cytogenetics:** 15q25.2

**RefSeq ORF:** 2427

**Synonyms:** WHAMM1; WHDC1

**Summary:** This gene encodes a protein that plays a role in actin nucleation, Golgi membrane association and microtubule binding. The encoded protein is a nucleation-promoting factor that regulates the Actin-related protein 2/3 complex. The activated complex initiates growth of new actin filaments by binding to existing actin filaments. The encoded protein also functions in regulation of transport from the endoplasmic reticulum to the Golgi complex and in maintenance of the Golgi complex near the centrosome. Four pseudogenes of this gene are present on the same arm of chromosome 15 as this gene. [provided by RefSeq, Aug 2013]

### Product images:



Coomassie blue staining of purified WHAMM protein (Cat# TP316211). The protein was produced from HEK293T cells transfected with WHAMM cDNA clone (Cat# [RC216211]) using MegaTran 2.0 (Cat# [TT210002]).