

## Product datasheet for **TP316196L**

### **LRRC2 (NM\_024512) Human Recombinant Protein**

#### **Product data:**

<b>Product Type:</b>	Recombinant Proteins
<b>Description:</b>	Recombinant protein of human leucine rich repeat containing 2 (LRRC2), transcript variant 1, 1 mg
<b>Species:</b>	Human
<b>Expression Host:</b>	HEK293T
<b>Expression cDNA Clone or AA Sequence:</b>	>RC216196 representing NM_024512 <b>Red</b> =Cloning site <b>Green</b> =Tags(s)

MGHKVWFDISVIRALWETRVKKHKAWQKKEVERLEKSALEKIKEEWNFVAECRRKGIPQAVYCKNGFID  
TSVRLLDKIERNTLTRQSSLPKDRGKRSSAFVFEISGEHWTELPDSLKEQTHLREWYISNTLIQIIPTYI  
QLFQAMRILDLPKNQISHLPAEIGCLKNLKELVGFNYLKSIPPELGDCENLERLDCSGNLELMELPFEL  
SNLKQVTFVDISANKFSSVPICVLRMSNLQWLDISSNNLTDLPQDIDRLEELQSFLLYKNKLTLYLPYSML  
NLKKLTLVSGDHLVELPTALCDSSTPLKFVSLMDNPIDNAQCEDGNEIMESERDRQHFDKEVMKAYIE  
DLKERESVPSYTTKVSFSLQL

**TRTRPLEQKLISEEDLAANDILDYKDDDDKV**

<b>Tag:</b>	C-Myc/DDK
<b>Predicted MW:</b>	42.8 kDa
<b>Concentration:</b>	>0.05 µg/µL as determined by microplate BCA method
<b>Purity:</b>	> 80% as determined by SDS-PAGE and Coomassie blue staining
<b>Buffer:</b>	25 mM Tris-HCl, 100 mM glycine, pH 7.3, 10% glycerol
<b>Preparation:</b>	Recombinant protein was captured through anti-DDK affinity column followed by conventional chromatography steps.
<b>Note:</b>	For testing in cell culture applications, please filter before use. Note that you may experience some loss of protein during the filtration process.
<b>Storage:</b>	Store at -80°C.
<b>Stability:</b>	Stable for 12 months from the date of receipt of the product under proper storage and handling conditions. Avoid repeated freeze-thaw cycles.
<b>RefSeq:</b>	<u><a href="#">NP_078788</a></u>



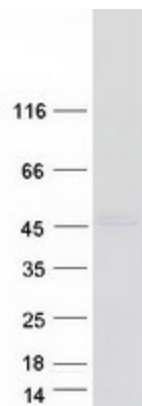
[View online »](#)

Locus ID: 79442  
UniProt ID: [Q9BYS8](#)  
RefSeq Size: 4860  
Cytogenetics: 3p21.31  
RefSeq ORF: 1113

**Summary:** This gene encodes a member of the leucine-rich repeat-containing family of proteins, which function in diverse biological pathways. This family member may possibly be a nuclear protein. Similarity to the RAS suppressor protein, as well as expression down-regulation observed in tumor cells, suggests that it may function as a tumor suppressor. The gene is located in the chromosome 3 common eliminated region 1 (C3CER1), a 1.4 Mb region that is commonly deleted in diverse tumors. A related pseudogene has been identified on chromosome 2. [provided by RefSeq, Sep 2011]

**Protein Families:** Druggable Genome

### Product images:



Coomassie blue staining of purified LRRC2 protein (Cat# [TP316196]). The protein was produced from HEK293T cells transfected with LRRC2 cDNA clone (Cat# [RC216196]) using MegaTran 2.0 (Cat# [TT210002]).