

## Product datasheet for **TP316173M**

### DEFB121 (NM\_001011878) Human Recombinant Protein

#### Product data:

Product Type:	Recombinant Proteins
Description:	Recombinant protein of human defensin, beta 121 (DEFB121), 100 µg
Species:	Human
Expression Host:	HEK293T
Expression cDNA Clone or AA Sequence:	>RC216173 protein sequence <b>Red</b> =Cloning site <b>Green</b> =Tags(s)
	MKLLLLLLTVTLLLAQVTPVMKCWGKSGRCRTTCKESEVYYILCKTEAKCCVDPKYVPVKPKLTDNTSL ESTSAV
	<b>TR</b> TRPLEQKLISEEDLAANDILDYKDDDDKV
Tag:	C-Myc/DDK
Predicted MW:	8.3 kDa
Concentration:	>0.05 µg/µL as determined by microplate BCA method
Purity:	> 80% as determined by SDS-PAGE and Coomassie blue staining
Buffer:	25 mM Tris-HCl, 100 mM glycine, pH 7.3, 10% glycerol
Preparation:	Recombinant protein was captured through anti-DDK affinity column followed by conventional chromatography steps.
Note:	For testing in cell culture applications, please filter before use. Note that you may experience some loss of protein during the filtration process.
Storage:	Store at -80°C.
Stability:	Stable for 12 months from the date of receipt of the product under proper storage and handling conditions. Avoid repeated freeze-thaw cycles.
RefSeq:	<a href="#">NP_001011878</a>
Locus ID:	245934
UniProt ID:	<a href="#">Q5J5C9</a> , <a href="#">A0A384MDM0</a>
RefSeq Size:	418
Cytogenetics:	20q11.21



[View online »](#)

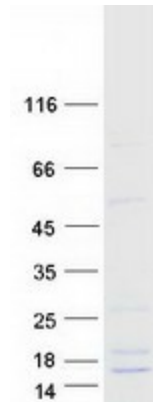
RefSeq ORF: 228

Synonyms: DEFB21; ESC42RELC

**Summary:** This gene encodes a member of the beta subfamily of defensins. Beta-defensins are antimicrobial peptides that protect tissues and organs from infection by a variety of microorganisms. This gene is found in a cluster with other beta-defensin genes on the long arm of chromosome 20. Two transcript variants encoding different isoforms have been found for this gene. [provided by RefSeq, Nov 2014]

**Protein Families:** Secreted Protein

### Product images:



Coomassie blue staining of purified DEFB121 protein (Cat# [TP316173]). The protein was produced from HEK293T cells transfected with DEFB121 cDNA clone (Cat# [RC216173]) using MegaTran 2.0 (Cat# [TT210002]).