

Product datasheet for **TP316153M**

RAPH1 (NM_203365) Human Recombinant Protein

Product data:

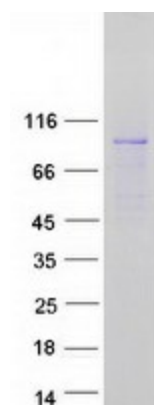
Product Type:	Recombinant Proteins
Description:	Recombinant protein of human Ras association (RalGDS/AF-6) and pleckstrin homology domains 1 (RAPH1), transcript variant 3, 100 µg
Species:	Human
Expression Host:	HEK293T
Expression cDNA Clone or AA Sequence:	>RC216153 representing NM_203365 Red =Cloning site Green =Tags(s)
	<p>MEQLSDEEIDHGAEEDSDKEDQDLDKMFGAWLGELDKLTQSLDSDKPMEPVKRSPLRQETNMANFSYR FS</p> <p>IYNLNEALNQGETVDLDALMADLCSIEQELSSIGSGNSKRQITETKATQKLPVSRHTLKHGTLKGLSSSS NRIAKPSHASYSLDDVTAQLEQASLSMDEAAQQSVLEDTKPLVTNQHRRTASAGTVSDAEVHSISNSSHS SITSAASSMDSLIDKVTQELDLTHQGQPIHAIKLRCSKQAKRHIDFTEEQAELTPHSYLDRETS LLLRLNIAGKPSHLLTKEEQAAKLKAEKIRVALEKIKEAQVKKLVIRVHMSDDSSKTMVDERQTVRQVLD NLMDKSHCGYSLDWSLVETVSELQMERIFEDHENLVNLLNWTRDSQNKLFIMERIEKYALFKNPQNYLL GKKETAEMADRNKEVLLKEECFCGSSVTVPKEIEGVLWLKDDGKKSWKRYFLLRASGIYVVPKGKAKVSRD LVCFLQLDHVNVVYQGQDYRNKYKAPTDYCLVLKHPQIQKKSQYIKYLCCDDVRTLHQWVNGIRIAKYGKQ LYMNYQEALKRTESAYDWTSLSSSSIKSGSSSSSIPESQSNHSNQSDSGVSDTQPAGHVRSQIVSSVFS EAWKRGTLQLEESSK</p> <p>TRTRPLEQKLISEEDLAANDILDYKDDDDKV</p>
Tag:	C-Myc/DDK
Predicted MW:	72.7 kDa
Concentration:	>0.05 µg/µL as determined by microplate BCA method
Purity:	> 80% as determined by SDS-PAGE and Coomassie blue staining
Buffer:	25 mM Tris-HCl, 100 mM glycine, pH 7.3, 10% glycerol
Preparation:	Recombinant protein was captured through anti-DDK affinity column followed by conventional chromatography steps.
Note:	For testing in cell culture applications, please filter before use. Note that you may experience some loss of protein during the filtration process.



[View online »](#)

Storage:	Store at -80°C.
Stability:	Stable for 12 months from the date of receipt of the product under proper storage and handling conditions. Avoid repeated freeze-thaw cycles.
RefSeq:	NP_976241
Locus ID:	65059
UniProt ID:	Q70E73
RefSeq Size:	2782
Cytogenetics:	2q33.2
RefSeq ORF:	1932
Synonyms:	ALS2CR9; ALS2CR18; LPD; PREL-2; PREL2; RaIGDS/AF-6; RMO1
Summary:	This gene encodes a protein that belongs to the Mig10/Rap1-interacting adaptor molecule/Lamellipodin family of adapter proteins, which function in cell migration. Members of this family contain pleckstrin-homology domains, Ras-association domains, and proline-rich C-termini. The protein encoded by this gene regulates actin dynamics through interaction with Ena/Vasodilator proteins as well as direct binding to filamentous actin to regulate actin network assembly. Alternative splicing results in multiple transcript variants. [provided by RefSeq, Jul 2016]

Product images:



Coomassie blue staining of purified RAPH1 protein (Cat# [TP316153]). The protein was produced from HEK293T cells transfected with RAPH1 cDNA clone (Cat# [RC216153]) using MegaTran 2.0 (Cat# [TT210002]).