

Product datasheet for **TP316153**

RAPH1 (NM_203365) Human Recombinant Protein

Product data:

Product Type: Recombinant Proteins

Description: Recombinant protein of human Ras association (RalGDS/AF-6) and pleckstrin homology domains 1 (RAPH1), transcript variant 3, 20 µg

Species: Human

Expression Host: HEK293T

Expression cDNA Clone or AA Sequence: >RC216153 representing NM_203365
Red=Cloning site **Green**=Tags(s)

MEQLSDEEIDHGAEEDSDKEDQDLDKMFGAWLGELDKLTQSLDSDKPMPEVKRSPLRQETNMANFSYRFS
IYNLNEALNQGETVDLDALMADLCSIEQELSSIGSGNSKRQITETKATQKLPVSRHTLKHGTLKGLSSSS
NRIAKPSHASYSLLDDVTAQLEQASLSMDEAAQSVLEDTKPLVTNQHRRASAGTVSDAEVHSISNSSHS
SITSAASSMDSLIDKVRPQELDLTHQGQPITEHAISLRCSKQAKRHIDFTEEQAELTPHSYLDRETS
LLLRNIAGKPSHLLTKEEQAAKLKAEKIRVALEKIKEAQVKKLVIRVHMSDDSSKTMVDERQTVRQVLD
NLMDSKSHCGYSLDWSLVETVSELQMERIFEDHENLLENWTRDSQNKLFMERIEKYALFKNPQNYLL
GKKETAEMADRNKEVLLLEECFCGSSVTVPEIEGVLWLKDDGKKSWKRYFLLRASGIYVYPKGKAKVSRD
LVCFLQLDHNVYVGQDYRNKYKAPTDYCLVLKHPQIQKKSQYIKYLCCDDVRTLHQVWNGIRIAKYGKQ
LYMNYQEALKRTESAYDWTSLSSSIKSGSSSSIPESQSNHSNQSDSGVSDTQPAGHVRSQSIVSSVFS
EAWKRGTQLEESSK

TRTRPLEQKLISEEDLAANDILDYKDDDDKV

Tag: C-Myc/DDK

Predicted MW: 72.7 kDa

Concentration: >0.05 µg/µL as determined by microplate BCA method

Purity: > 80% as determined by SDS-PAGE and Coomassie blue staining

Buffer: 25 mM Tris-HCl, 100 mM glycine, pH 7.3, 10% glycerol

Preparation: Recombinant protein was captured through anti-DDK affinity column followed by conventional chromatography steps.

Note: For testing in cell culture applications, please filter before use. Note that you may experience some loss of protein during the filtration process.

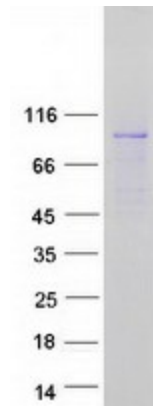
Storage: Store at -80°C.



[View online »](#)

Stability:	Stable for 12 months from the date of receipt of the product under proper storage and handling conditions. Avoid repeated freeze-thaw cycles.
RefSeq:	NP_976241
Locus ID:	65059
UniProt ID:	Q70E73
RefSeq Size:	2782
Cytogenetics:	2q33.2
RefSeq ORF:	1932
Synonyms:	ALS2CR9; ALS2CR18; LPD; PREL-2; PREL2; RalGDS/AF-6; RMO1
Summary:	This gene encodes a protein that belongs to the Mig10/Rap1-interacting adaptor molecule/Lamellipodin family of adapter proteins, which function in cell migration. Members of this family contain pleckstrin-homology domains, Ras-association domains, and proline-rich C-termini. The protein encoded by this gene regulates actin dynamics through interaction with Ena/Vasodilator proteins as well as direct binding to filamentous actin to regulate actin network assembly. Alternative splicing results in multiple transcript variants. [provided by RefSeq, Jul 2016]

Product images:



Coomassie blue staining of purified RAPH1 protein (Cat# TP316153). The protein was produced from HEK293T cells transfected with RAPH1 cDNA clone (Cat# [RC216153]) using MegaTran 2.0 (Cat# [TT210002]).