

Product datasheet for **TP316137L**

KIF3C (NM_002254) Human Recombinant Protein

Product data:

Product Type: Recombinant Proteins
Description: Recombinant protein of human kinesin family member 3C (KIF3C), 1 mg
Species: Human
Expression Host: HEK293T
Expression cDNA Clone or AA Sequence: >RC216137 protein sequence
Red=Cloning site **Green**=Tags(s)

MASKTKASEALKVVARCRPLSRKEEAAGHEQILTMDVKLGQVTLRNPRAAPGELPKTFTFDVAVDASSKQ
ADLYDETVRPLIDSVLQGFNGTVFAYGQTGTGKTYTMQGTWVEPELRGVIPNAFEHIFTHISRSQNQQYL
VRASYLEIYQEEIRDLLSKEPGKRLELKENPETGVYIKDLSSFVTKNVKEIEHVMNLGNQTRAVGSTHMN
EVSSRSHAFIITVECSERGSQDQHIRVGLNLVLAGSERQNKAGPNTAGGAATPSSGGGGGGGGSGG
GAGGERPKEASKINLSLSALGNVIAALAGNRSTHIPYRDSKLRLLQDSLGGNAKTIMVATLGPASHSYD
ESLSTLRFANRAKNIKPKRVNEDPKDTLLREFQEEIARLKAQLEKRGMLGKRPRRKSRRKKAVSAPPG
YPEGPVIEAWVAEEEDDNNNNHRPPQPILESALKMENYLQEQKERLEEEKAAIQDDRSLVSEEKQKLL
EEKEKMLEDLRREQQATELLAAKYKAMESKLLIGGRNIMDHTNEQQKMLELKRQIEAQKRREREMQQEM
MLRDEETMELRGTYTSLQQEVEVKTKKLKYAKLQAVKAEIQDQHDEYIRVRQDLEEAQNEQTRELKLL
YLIENFIPPEEKNIKIMNRLFLDCEEEQWKFPVLPAGVSSSQMKKRPTS AVGYKRPISQYARVAMAMGS
HPRYRAENIMFLELDVSPPAVFEMEFSDQEQDPRALHMERLMRLDSFLERPSTSKVRKRSWCQSPQRP
PPSTTHASLASASLRPATVADHE

TRTRPLEQKLISEEDLAANDILDYKDDDDKV

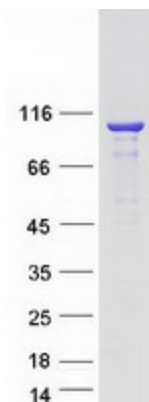
Tag: C-Myc/DDK
Predicted MW: 89.3 kDa
Concentration: >0.05 µg/µL as determined by microplate BCA method
Purity: > 80% as determined by SDS-PAGE and Coomassie blue staining
Buffer: 25 mM Tris-HCl, 100 mM glycine, pH 7.3, 10% glycerol
Preparation: Recombinant protein was captured through anti-DDK affinity column followed by conventional chromatography steps.
Note: For testing in cell culture applications, please filter before use. Note that you may experience some loss of protein during the filtration process.



[View online »](#)

Storage:	Store at -80°C.
Stability:	Stable for 12 months from the date of receipt of the product under proper storage and handling conditions. Avoid repeated freeze-thaw cycles.
RefSeq:	NP_002245
Locus ID:	3797
UniProt ID:	O14782 , A2RU78
RefSeq Size:	5431
Cytogenetics:	2p23.3
RefSeq ORF:	2379
Summary:	Microtubule-based anterograde translocator for membranous organelles.[UniProtKB/Swiss-Prot Function]
Protein Families:	Druggable Genome

Product images:



Coomassie blue staining of purified KIF3C protein (Cat# [TP316137]). The protein was produced from HEK293T cells transfected with KIF3C cDNA clone (Cat# [RC216137]) using MegaTran 2.0 (Cat# [TT210002]).