

## Product datasheet for TP316137

### KIF3C (NM\_002254) Human Recombinant Protein

#### Product data:

Product Type:	Recombinant Proteins
Description:	Recombinant protein of human kinesin family member 3C (KIF3C), 20 µg
Species:	Human
Expression Host:	HEK293T
Expression cDNA Clone or AA Sequence:	>RC216137 protein sequence <b>Red</b> =Cloning site <b>Green</b> =Tags(s)

MASKTKASEALKVVARCRPLSRKEEAAGHEQILTMDVKLGQVTLRNPRAAPGELPKTFTFDVAVDASSKQ  
ADLYDETVRPLIDSVLQGFNGTVFAYGQTGTGKTYTMQGTWVEPELRGVIPNAFEHIFTHISRSQNQQYL  
VRASYLEIYQEEIRDLLSKEPGKRLELKENPETGVYIKDLSSFVTKNVKEIEHVMNLGNQTRAVGSTHMN  
EVSSRSHAFIITVECSERGSQDGHIRVGKLNLDLAGSERQNKAGPNTAGGAATPSSGGGGGGGGSGG  
GAGGERPKEASKINLSLSALGNVIAALAGNRSTHIPYRDSKLRLLQDSLGGNAKTIMVATLGPASHSYD  
ESLSTLRFANRAKNIKPKRVNEDPKDTLLREFQEEIARLKAQLEKRGMLGKRPRRKSRRKKAVSAPPG  
YPEGPVIEAWVAEEEDDNNNNHRPPQPILESALKMENYLQEQKERLEEEKAAIQDDRSLVSEEKQKLL  
EEKEKMLEDLRREQQATELLAAKYKAMESKLLIGGRNIMDHTNEQQKMLELKRQIEAQKRREREMQQEM  
MLRDEETMELRGTYTSLQQEVEVKTKKLKLKLYAKLQAVKAEIQDQHDEYIRVRQDLEEAQNEQTRELKLL  
YLIENFIPPEEKNIKIMNRLFLDCEEEQWKFQPLVPAGVSSSQMKKRPTS AVGYKRPISQYARVAMAMGS  
HPRYRAENIMFLELDVSPPAVFEMEFSDQEQDPRALHMERLMRLDSFLERPSTSKVRKRSWCQSPQRP  
PPSTTHASLASASLRPATVADHE

**TRTRPLEQKLISEEDLAANDILDYKDDDDKV**

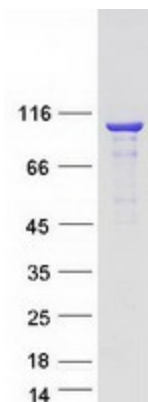
Tag:	C-Myc/DDK
Predicted MW:	89.3 kDa
Concentration:	>0.05 µg/µL as determined by microplate BCA method
Purity:	> 80% as determined by SDS-PAGE and Coomassie blue staining
Buffer:	25 mM Tris-HCl, 100 mM glycine, pH 7.3, 10% glycerol
Preparation:	Recombinant protein was captured through anti-DDK affinity column followed by conventional chromatography steps.
Note:	For testing in cell culture applications, please filter before use. Note that you may experience some loss of protein during the filtration process.



[View online »](#)

Storage:	Store at -80°C.
Stability:	Stable for 12 months from the date of receipt of the product under proper storage and handling conditions. Avoid repeated freeze-thaw cycles.
RefSeq:	<a href="#">NP_002245</a>
Locus ID:	3797
UniProt ID:	<a href="#">O14782</a> , <a href="#">A2RU78</a>
RefSeq Size:	5431
Cytogenetics:	2p23.3
RefSeq ORF:	2379
Summary:	Microtubule-based anterograde translocator for membranous organelles.[UniProtKB/Swiss-Prot Function]
Protein Families:	Druggable Genome

### Product images:



Coomassie blue staining of purified KIF3C protein (Cat# TP316137). The protein was produced from HEK293T cells transfected with KIF3C cDNA clone (Cat# [RC216137]) using MegaTran 2.0 (Cat# [TT210002]).