

Product datasheet for TP316135M

cleavage stimulation factor (CSTF1) (NM_001033522) Human Recombinant Protein

Product data:

Product Type: Recombinant Proteins
Description: Recombinant protein of human cleavage stimulation factor, 3' pre-RNA, subunit 1, 50kDa (CSTF1), transcript variant 3, 100 µg

Species: Human

Expression Host: HEK293T

Expression cDNA Clone or AA Sequence: >RC216135 protein sequence
 Red=Cloning site Green=Tags(s)

MYRTKVGLKDRQQLYKLIISQLLYDGYISIANGLINEIKPQSVCAPSEQLLHLIKLGMENDDTAVQYAIG
 RSDTVAPGTGIDLEFDADVQTMSPSEAYETCYVTSHKGPCRVATYSRDGQLIATGSADASIKILDDTERM
 LAKSAMPIEVMMNETAQQNMENHPVIRTLYDHVDEVTCLAFHPTEQILASGSRDYTLKLFDYKPSAKRA
 FKYIQEAEMLRISIFHPSGDFILVGTQHPTLRLYDINTFQCFVSCNPQDQHTDAICSVNYNSSANMYVTG
 SKDGCIKLWDGVSNRCITTFEKAHDGAEVCSAIFSKNSKYILSSGKDSVAKLWEISTGRTLVRVTGAGLS
 GRQVHRTQAVFNHTEDYVLLPDERTISLCCWDSRTAERRNLLSLGHNNIVRCIVHSPTNPGFMTCSDDFR
 ARFWYRRSTTD

TRTRPLEQKLISEEDLAANDILDYKDDDDKV

Tag: C-Myc/DDK

Predicted MW: 48.2 kDa

Concentration: >0.05 µg/µL as determined by microplate BCA method

Purity: > 80% as determined by SDS-PAGE and Coomassie blue staining

Buffer: 25 mM Tris-HCl, 100 mM glycine, pH 7.3, 10% glycerol

Preparation: Recombinant protein was captured through anti-DDK affinity column followed by conventional chromatography steps.

Note: For testing in cell culture applications, please filter before use. Note that you may experience some loss of protein during the filtration process.

Storage: Store at -80°C.

Stability: Stable for 12 months from the date of receipt of the product under proper storage and handling conditions. Avoid repeated freeze-thaw cycles.



[View online »](#)

RefSeq: [NP_001028694](#)

Locus ID: 1477

UniProt ID: [Q05048](#)

RefSeq Size: 2292

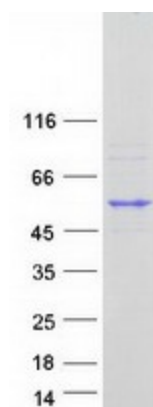
Cytogenetics: 20q13.2-q13.31

RefSeq ORF: 1293

Synonyms: CstF-50; CstFp50

Summary: This gene encodes one of three subunits which combine to form cleavage stimulation factor (CSTF). CSTF is involved in the polyadenylation and 3'end cleavage of pre-mRNAs. Similar to mammalian G protein beta subunits, this protein contains transducin-like repeats. Several transcript variants with different 5' UTR, but encoding the same protein, have been found for this gene. [provided by RefSeq, Jul 2008]

Product images:



Coomassie blue staining of purified CSTF1 protein (Cat# [TP316135]). The protein was produced from HEK293T cells transfected with CSTF1 cDNA clone (Cat# [RC216135]) using MegaTran 2.0 (Cat# [TT210002]).