

## Product datasheet for TP316135

### cleavage stimulation factor (CSTF1) (NM\_001033522) Human Recombinant Protein

#### Product data:

**Product Type:** Recombinant Proteins  
**Description:** Recombinant protein of human cleavage stimulation factor, 3' pre-RNA, subunit 1, 50kDa (CSTF1), transcript variant 3, 20 µg

**Species:** Human

**Expression Host:** HEK293T

**Expression cDNA Clone or AA Sequence:** >RC216135 protein sequence  
**Red**=Cloning site **Green**=Tags(s)

MYRTKVGLKDRQQLYKLIISQLLYDGYISIANGLINEIKPQSVCAPSEQLLHLIKLGMENDDTAVQYAIG  
RSDTVAPGTGIDLEFDADVQTMSPSEAYETCYVTSHKGPCRVATYSRDGQLIATGSADASIKILDDTERM  
LAKSAMPIEVMNETAQQNMENHPVIRTLYDHVDEVTCLAFHPTEQILASGSRDYTLKLFDYKPSAKRA  
FKYIQEAEMLRISIFHPSGDFILVGTQHPTLRLYDINTFQCFVSCNPQDQHTDAICSVNYNSSANMYVTG  
SKDGCIKLWDGVSNNRCITTFEKAHDGAEVCSAIFSKNSKYILSSGKDSVAKLWEISTGRTLVRVTGAGLS  
GRQVHRTQAVFNHTEDYVLLPDERTISLCCWDSRTAERRNLLSLGHNNIVRCIVHSPTNPGFMTCSDDFR  
ARFWYRRSTTD

**TRTRPLEQKLISEEDLAANDILDYKDDDDKV**

**Tag:** C-Myc/DDK

**Predicted MW:** 48.2 kDa

**Concentration:** >0.05 µg/µL as determined by microplate BCA method

**Purity:** > 80% as determined by SDS-PAGE and Coomassie blue staining

**Buffer:** 25 mM Tris-HCl, 100 mM glycine, pH 7.3, 10% glycerol

**Preparation:** Recombinant protein was captured through anti-DDK affinity column followed by conventional chromatography steps.

**Note:** For testing in cell culture applications, please filter before use. Note that you may experience some loss of protein during the filtration process.

**Storage:** Store at -80°C.

**Stability:** Stable for 12 months from the date of receipt of the product under proper storage and handling conditions. Avoid repeated freeze-thaw cycles.



[View online »](#)

RefSeq: [NP\\_001028694](#)

Locus ID: 1477

UniProt ID: [Q05048](#)

RefSeq Size: 2292

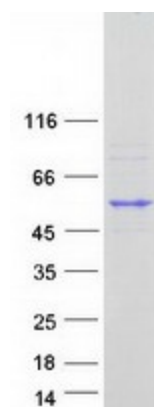
Cytogenetics: 20q13.2-q13.31

RefSeq ORF: 1293

Synonyms: CstF-50; CstFp50

**Summary:** This gene encodes one of three subunits which combine to form cleavage stimulation factor (CSTF). CSTF is involved in the polyadenylation and 3'end cleavage of pre-mRNAs. Similar to mammalian G protein beta subunits, this protein contains transducin-like repeats. Several transcript variants with different 5' UTR, but encoding the same protein, have been found for this gene. [provided by RefSeq, Jul 2008]

### Product images:



Coomassie blue staining of purified CSTF1 protein (Cat# TP316135). The protein was produced from HEK293T cells transfected with CSTF1 cDNA clone (Cat# [RC216135]) using MegaTran 2.0 (Cat# [TT210002]).