

Product datasheet for **TP316115**

SPRR2F (NM_001014450) Human Recombinant Protein

Product data:

Product Type:	Recombinant Proteins
Description:	Recombinant protein of human small proline-rich protein 2F (SPRR2F), 20 µg
Species:	Human
Expression Host:	HEK293T
Expression cDNA Clone or AA Sequence:	>RC216115 representing NM_001014450 Red =Cloning site Green =Tags(s) MSYQQQCKQPCQPPPVCAPKCEPCPPPKCEPCPPSKCPQSCPPQQCQQKCPPVTPSPPCQPKCPPK SK TRTRPLEQKLISEEDLAANDILDYKDDDDKV
Tag:	C-Myc/DDK
Predicted MW:	7.6 kDa
Concentration:	>0.05 µg/µL as determined by microplate BCA method
Purity:	> 80% as determined by SDS-PAGE and Coomassie blue staining
Buffer:	25 mM Tris-HCl, 100 mM glycine, pH 7.3, 10% glycerol
Preparation:	Recombinant protein was captured through anti-DDK affinity column followed by conventional chromatography steps.
Note:	For testing in cell culture applications, please filter before use. Note that you may experience some loss of protein during the filtration process.
Storage:	Store at -80°C.
Stability:	Stable for 12 months from the date of receipt of the product under proper storage and handling conditions. Avoid repeated freeze-thaw cycles.
RefSeq:	NP_001014450
Locus ID:	6705
UniProt ID:	Q96RM1
RefSeq Size:	657
Cytogenetics:	1q21.3

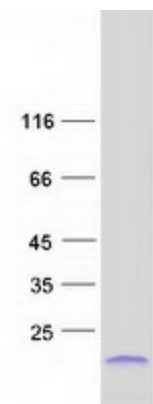


[View online »](#)

RefSeq ORF: 216

Summary: Cross-linked envelope protein of keratinocytes. It is a keratinocyte protein that first appears in the cell cytosol, but ultimately becomes cross-linked to membrane proteins by transglutaminase. All that results in the formation of an insoluble envelope beneath the plasma membrane (By similarity).[UniProtKB/Swiss-Prot Function]

Product images:



Coomassie blue staining of purified SPRR2F protein (Cat# TP316115). The protein was produced from HEK293T cells transfected with SPRR2F cDNA clone (Cat# [RC216115]) using MegaTran 2.0 (Cat# [TT210002]).