

Product datasheet for TP316110

GRB 14 (GRB14) (NM_004490) Human Recombinant Protein

Product data:

Product Type:	Recombinant Proteins
Description:	Recombinant protein of human growth factor receptor-bound protein 14 (GRB14), 20 µg
Species:	Human
Expression Host:	HEK293T
Expression cDNA Clone or AA Sequence:	>RC216110 protein sequence Red =Cloning site Green =Tags(s)
	<p>MTTSLQDQGQSAASRAAARDSPPLAAQVCGAAQGRGDAHDLAPAPWLHARALLPLPDGTRGCAADRRKKKDL DVPEMPSIPNPFPELCCSPFTSVLSADLFPKANSRKKQVIKVSSEDETSRALDVPDITARDVCQLLILK NHYIDDHSWTLFEHLPHIGVERTIEDHELVIELSNWGIEENKLYFRKKNYAKYEFFKNPMYFFPEHMVS FATETNGEISPTQILQMFLSSSTYPEIHGFLHAKEQGKKSWKIYFFLRRSGLYFSTKGTSKEPHRLQFF SEFGNSDIYVSLAGKKKHGAPTNYGFCFKPNKAGGPRDLKMLCAEEEQSRTCWVTAIRLLKYGMQLYQNY MHPYQGRSGCSSQSISPMRSISENSLVAMDFSGQKSRVIENPTEALSVAVEEGLAWRKKGCLRLGTHGSP TASSQSSATNMAIHRSPWFHFKISRDEAQRLLIQQLVDGVFLVRDSQSNPKTFVLSMSHGQKIKHFQI IPVEDDGEMFHTLDDGHTRFTDLIQLVEFYQLNKGVLPCCLKHYCARIAL</p> <p>TRTRPLEQKLISEEDLAANDILDYKDDDDKV</p>
Tag:	C-Myc/DDK
Predicted MW:	60.8 kDa
Concentration:	>0.05 µg/µL as determined by microplate BCA method
Purity:	> 80% as determined by SDS-PAGE and Coomassie blue staining
Buffer:	25 mM Tris-HCl, 100 mM glycine, pH 7.3, 10% glycerol
Preparation:	Recombinant protein was captured through anti-DDK affinity column followed by conventional chromatography steps.
Note:	For testing in cell culture applications, please filter before use. Note that you may experience some loss of protein during the filtration process.
Storage:	Store at -80°C.
Stability:	Stable for 12 months from the date of receipt of the product under proper storage and handling conditions. Avoid repeated freeze-thaw cycles.



[View online >](#)

RefSeq: [NP_004481](#)

Locus ID: 2888

UniProt ID: [Q14449](#)

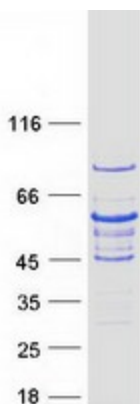
RefSeq Size: 2402

Cytogenetics: 2q24.3

RefSeq ORF: 1620

Summary: The product of this gene belongs to a small family of adapter proteins that are known to interact with a number of receptor tyrosine kinases and signaling molecules. This gene encodes a growth factor receptor-binding protein that interacts with insulin receptors and insulin-like growth-factor receptors. This protein likely has an inhibitory effect on receptor tyrosine kinase signaling and, in particular, on insulin receptor signaling. This gene may play a role in signaling pathways that regulate growth and metabolism. Alternative splicing results in multiple transcript variants. [provided by RefSeq, Dec 2014]

Product images:



Coomassie blue staining of purified GRB14 protein (Cat# TP316110). The protein was produced from HEK293T cells transfected with GRB14 cDNA clone (Cat# [RC216110]) using MegaTran 2.0 (Cat# [TT210002]).