

Product datasheet for **TP316105M**

COMMD6 (NM_203495) Human Recombinant Protein

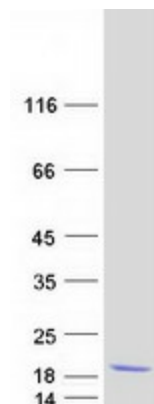
Product data:

Product Type:	Recombinant Proteins
Description:	Recombinant protein of human COMM domain containing 6 (COMMD6), transcript variant 2, 100 µg
Species:	Human
Expression Host:	HEK293T
Expression cDNA Clone or AA Sequence:	>RC216105 protein sequence Red =Cloning site Green =Tags(s) MEASSEPLDAKSDVTNQLVDFQWKLGMVSSDTCRSLKYPYVAVMLKVADHSGQVKTKCFEMTIPQFQ N FYRQFKEIAAVIETV TR TRPLEQKLISEEDLAANDILDYKDDDDKV
Tag:	C-Myc/DDK
Predicted MW:	9.5 kDa
Concentration:	>0.05 µg/µL as determined by microplate BCA method
Purity:	> 80% as determined by SDS-PAGE and Coomassie blue staining
Buffer:	25 mM Tris-HCl, 100 mM glycine, pH 7.3, 10% glycerol
Preparation:	Recombinant protein was captured through anti-DDK affinity column followed by conventional chromatography steps.
Note:	For testing in cell culture applications, please filter before use. Note that you may experience some loss of protein during the filtration process.
Storage:	Store at -80°C.
Stability:	Stable for 12 months from the date of receipt of the product under proper storage and handling conditions. Avoid repeated freeze-thaw cycles.
RefSeq:	<u>NP_987091</u>
Locus ID:	170622
UniProt ID:	<u>Q7Z4G1</u>


[View online »](#)

RefSeq Size:	1695
Cytogenetics:	13q22.2
RefSeq ORF:	255
Synonyms:	Acrg
Summary:	COMMD6 belongs to a family of NF-kappa-B (see RELA; MIM 164014)-inhibiting proteins characterized by the presence of a COMM domain (see COMMD1; MIM 607238) (de Bie et al., 2006 [PubMed 16573520]).[supplied by OMIM, Mar 2009]

Product images:



Coomassie blue staining of purified COMMD6 protein (Cat# [TP316105]). The protein was produced from HEK293T cells transfected with COMMD6 cDNA clone (Cat# [RC216105]) using MegaTran 2.0 (Cat# [TT210002]).