

Product datasheet for **TP316105**

COMMD6 (NM_203495) Human Recombinant Protein

Product data:

| | |
|---------------------------------------|--|
| Product Type: | Recombinant Proteins |
| Description: | Recombinant protein of human COMM domain containing 6 (COMMD6), transcript variant 2, 20 µg |
| Species: | Human |
| Expression Host: | HEK293T |
| Expression cDNA Clone or AA Sequence: | >RC216105 protein sequence Red =Cloning site Green =Tags(s) |
| | MEASSEPLDAKSDVTNQLVDFQWKLGMVSSDTCRSLKYPYVAVMLKVADHSGQVKTKCFEMTIPQFQN FYRQFKEIAAVIETV |
| | TRTRPLEQKLISEEDLAANDILDYKDDDDKV |
| Tag: | C-Myc/DDK |
| Predicted MW: | 9.5 kDa |
| Concentration: | >0.05 µg/µL as determined by microplate BCA method |
| Purity: | > 80% as determined by SDS-PAGE and Coomassie blue staining |
| Buffer: | 25 mM Tris-HCl, 100 mM glycine, pH 7.3, 10% glycerol |
| Preparation: | Recombinant protein was captured through anti-DDK affinity column followed by conventional chromatography steps. |
| Note: | For testing in cell culture applications, please filter before use. Note that you may experience some loss of protein during the filtration process. |
| Storage: | Store at -80°C. |
| Stability: | Stable for 12 months from the date of receipt of the product under proper storage and handling conditions. Avoid repeated freeze-thaw cycles. |
| RefSeq: | NP_987091 |
| Locus ID: | 170622 |
| UniProt ID: | Q7Z4G1 |
| RefSeq Size: | 1695 |



[View online »](#)

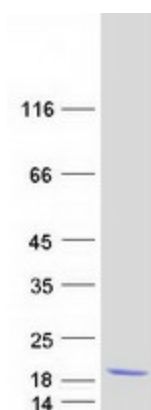
Cytogenetics: 13q22.2

RefSeq ORF: 255

Synonyms: Acrg

Summary: COMMD6 belongs to a family of NF-kappa-B (see RELA; MIM 164014)-inhibiting proteins characterized by the presence of a COMM domain (see COMMD1; MIM 607238) (de Bie et al., 2006 [PubMed 16573520]).[supplied by OMIM, Mar 2009]

Product images:



Coomassie blue staining of purified COMMD6 protein (Cat# TP316105). The protein was produced from HEK293T cells transfected with COMMD6 cDNA clone (Cat# [RC216105]) using MegaTran 2.0 (Cat# [TT210002]).