

Product datasheet for **TP316073L**

Junctional Adhesion Molecule C (JAM3) (NM_032801) Human Recombinant Protein

Product data:

Product Type:	Recombinant Proteins
Description:	Recombinant protein of human junctional adhesion molecule 3 (JAM3), 1 mg
Species:	Human
Expression Host:	HEK293T
Expression cDNA Clone or AA Sequence:	>RC216073 representing NM_032801 Red =Cloning site Green =Tags(s)
	<p>MVPARLGPVAVAMVTGAGRRVLAGWAHARGDYKPRRAAAGPSATLDMALRRPPRLRLCARLPDFFLLLLFR GCLIGAVNLKSSNRTPVVQEFESVELSCIITDSQTSDPRIEWKKIQDEQTTYVFFDNKIQQDLAGRAEIL GKTSLSKIWNVTRRDSALYRCEVVARNDRKEIDEIVIELTVQVKPVPVCRVPKAVPVGKMATLHCQESEG HPRPHYSWYRNDVPLPTDSRANPRFRNSSFHLNSETGLVFTAVHKDDSGQYYCIASNDAGSARCEEQEM EYVDLNIIGGIIGGVLVLAVALITLGICCAYYRRGYFINNKQDGESYKNPGKPDGVNYIRTDEEGDFRHK SSFVI</p> <p>TRTRPLEQKLISEEDLAANDILDYKDDDDKV</p>
Tag:	C-Myc/DDK
Predicted MW:	36.5 kDa
Concentration:	>0.05 µg/µL as determined by microplate BCA method
Purity:	> 80% as determined by SDS-PAGE and Coomassie blue staining
Buffer:	25 mM Tris-HCl, 100 mM glycine, pH 7.3, 10% glycerol
Preparation:	Recombinant protein was captured through anti-DDK affinity column followed by conventional chromatography steps.
Note:	For testing in cell culture applications, please filter before use. Note that you may experience some loss of protein during the filtration process.
Storage:	Store at -80°C.
Stability:	Stable for 12 months from the date of receipt of the product under proper storage and handling conditions. Avoid repeated freeze-thaw cycles.
RefSeq:	NP_116190
Locus ID:	83700



[View online »](#)

UniProt ID: [Q9BX67](#)

RefSeq Size: 3675

Cytogenetics: 11q25

RefSeq ORF: 1065

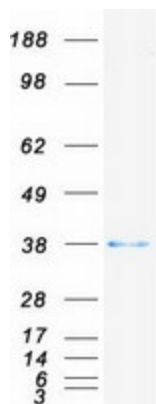
Synonyms: JAM-2; JAM-3; JAM-C; JAMC

Summary: Tight junctions represent one mode of cell-to-cell adhesion in epithelial or endothelial cell sheets, forming continuous seals around cells and serving as a physical barrier to prevent solutes and water from passing freely through the paracellular space. The protein encoded by this immunoglobulin superfamily gene member is localized in the tight junctions between high endothelial cells. Unlike other proteins in this family, the this protein is unable to adhere to leukocyte cell lines and only forms weak homotypic interactions. The encoded protein is a member of the junctional adhesion molecule protein family and acts as a receptor for another member of this family. A mutation in an intron of this gene is associated with hemorrhagic destruction of the brain, subependymal calcification, and congenital cataracts. Alternative splicing results in multiple transcript variants.[provided by RefSeq, Apr 2011]

Protein Families: Druggable Genome, Transmembrane

Protein Pathways: Cell adhesion molecules (CAMs), Epithelial cell signaling in Helicobacter pylori infection, Leukocyte transendothelial migration, Tight junction

Product images:



Coomassie blue staining of purified JAM3 protein (Cat# [TP316073]). The protein was produced from HEK293T cells transfected with JAM3 cDNA clone (Cat# [RC216073]) using MegaTran 2.0 (Cat# [TT210002]).