

## Product datasheet for **TP316028M**

### Luteinizing Hormone beta (LHB) (NM\_000894) Human Recombinant Protein

#### Product data:

|                                       |  |
|---------------------------------------|--|
| Product Type:                         | Recombinant Proteins   |
| Description:                          | Recombinant protein of human luteinizing hormone beta polypeptide (LHB), 100 µg  |
| Species:                              | Human  |
| Expression Host:                      | HEK293T  |
| Expression cDNA Clone or AA Sequence: | >RC216028 representing NM_000894<br><b>Red</b> =Cloning site <b>Green</b> =Tags(s)   |
|                                       | MEMLQGLLLLLLLSMGGAWASREPLRPWCHPINAILAVEKEGCPVCITVNTTICAGYCPTMMRVLQAVLP<br>PLPQVVTYRDVRFESIRLPGCPRGVPVVSFPVALSCRCGPCRRSTSDCGGPKDHPLTCDHPQLSGLLF<br>L  |
|                                       | <b>TRTRPLEQKLISEEDLAANDILDYKDDDDKV</b>   |
| Tag:                                  | C-Myc/DDK  |
| Predicted MW:                         | 13.2 kDa   |
| Concentration:                        | >0.05 µg/µL as determined by microplate BCA method   |
| Purity:                               | > 80% as determined by SDS-PAGE and Coomassie blue staining  |
| Buffer:                               | 25 mM Tris-HCl, 100 mM glycine, pH 7.3, 10% glycerol   |
| Preparation:                          | Recombinant protein was captured through anti-DDK affinity column followed by conventional chromatography steps.                                     |
| Note:                                 | For testing in cell culture applications, please filter before use. Note that you may experience some loss of protein during the filtration process. |
| Storage:                              | Store at -80°C.  |
| Stability:                            | Stable for 12 months from the date of receipt of the product under proper storage and handling conditions. Avoid repeated freeze-thaw cycles.        |
| RefSeq:                               | <a href="#">NP_000885</a>  |
| Locus ID:                             | 3972   |
| UniProt ID:                           | <a href="#">P01229</a> , <a href="#">A0A0F7RQE6</a>  |
| RefSeq Size:                          | 523  |



[View online »](#)

**Cytogenetics:** 19q13.33

**RefSeq ORF:** 423

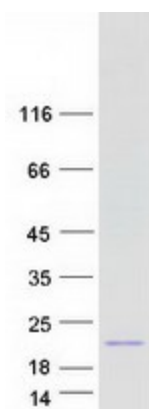
**Synonyms:** CGB4; HH23; LSH-B; LSH-beta

**Summary:** This gene is a member of the glycoprotein hormone beta chain family and encodes the beta subunit of luteinizing hormone (LH). Glycoprotein hormones are heterodimers consisting of a common alpha subunit and an unique beta subunit which confers biological specificity. LH is expressed in the pituitary gland and promotes spermatogenesis and ovulation by stimulating the testes and ovaries to synthesize steroids. The genes for the beta chains of chorionic gonadotropin and for luteinizing hormone are contiguous on chromosome 19q13.3. Mutations in this gene are associated with hypogonadism which is characterized by infertility and pseudohermaphroditism. [provided by RefSeq, Jul 2008]

**Protein Families:** Druggable Genome, Secreted Protein

**Protein Pathways:** GnRH signaling pathway, Neuroactive ligand-receptor interaction

### Product images:



Coomassie blue staining of purified LHB protein (Cat# [TP316028]). The protein was produced from HEK293T cells transfected with LHB cDNA clone (Cat# [RC216028]) using MegaTran 2.0 (Cat# [TT210002]).