

Product datasheet for TP316003

COL8A2 (NM_005202) Human Recombinant Protein

Product data:

Product Type: Recombinant Proteins
Description: Recombinant protein of human collagen, type VIII, alpha 2 (COL8A2), 20 µg
Species: Human
Expression Host: HEK293T
Expression cDNA Clone or AA Sequence: >RC216003 representing NM_005202
Red=Cloning site Green=Tags(s)

MLGTLTPLSSLLLLLVLVLCGPRASSGGGAGGAAGYAPVKYIQPMQKGPVGGPPFREGKGQYLEMPLPL
 LPMDLKGEPGPPGKPGPRGPPGPPGFPGKPGMGKPLHGQPGPAGPPGFSRMGKAGPPGLPGKVGPPGQP
 GLRGEPGIRGDQGLRGPPGPPGLPGPSGITIPGKPGAQGVPPGFQGEPPQGEPPGDRGLKGDNGV
 GQGPLGAPGQGGAPGPPGLPGPAGLGPGLDGLPGAPGDKGESGPPGVPGRGEPGAVGPKGPPGVDGV
 GVPGAAGLPGPQGPSGAKGEPGTRGPPGLIGPTGYGMPGLPGPKGDRGPAGVPGLLDGRGEPGEDGEPGE
 QGPQGLGGPPGLPGSAGLPGRRGPPGPKGEAGPGGPPGVPGIRGDQGPSGLAGKPGVPERGLPGAHGPP
 GPTGPKGEPGFTGRPGGPGVAGALGQKGDGLPGQPGLRGPSPGIPGLQGPAGPIGPQLPGLKGEPLPG
 PPGEGRAGEPGTAGPTGPPGVPGSPGITGPPGPPGPPGPPGAPGAFADETGIAGLHLPNGGVEGAVLGKGG
 KPQFGLGELSAHATPAFTAULTSPFPASGMPVKFDRDLYNGHSGYNPATGIFTCPVGGVYFAYHVHVKG
 TNVWVALYKNNVPATYTYDEYKKGYLDAQSGGAVLQLRPNDQVWVQMPSDQANGLYSTEYIHSSFSGLL
 CPT

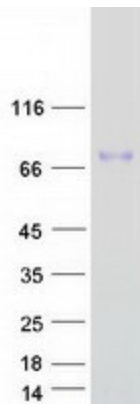
TRTRPLEQKLISEEDLAANDILDYKDDDDKV

Tag: C-Myc/DDK
Predicted MW: 64.4 kDa
Concentration: >0.05 µg/µL as determined by microplate BCA method
Purity: > 80% as determined by SDS-PAGE and Coomassie blue staining
Buffer: 25 mM Tris-HCl, 100 mM glycine, pH 7.3, 10% glycerol
Preparation: Recombinant protein was captured through anti-DDK affinity column followed by conventional chromatography steps.
Note: For testing in cell culture applications, please filter before use. Note that you may experience some loss of protein during the filtration process.
Storage: Store at -80°C.



[View online »](#)

Stability:	Stable for 12 months from the date of receipt of the product under proper storage and handling conditions. Avoid repeated freeze-thaw cycles.
RefSeq:	<u>NP_005193</u>
Locus ID:	1296
UniProt ID:	<u>P25067</u>
RefSeq Size:	4443
Cytogenetics:	1p34.3
RefSeq ORF:	2109
Synonyms:	FECD; FECD1; PPCD; PPCD2
Summary:	This gene encodes the alpha 2 chain of type VIII collagen. This protein is a major component of the basement membrane of the corneal endothelium and forms homo- or heterotrimers with alpha 1 (VIII) type collagens. Defects in this gene are associated with Fuchs endothelial corneal dystrophy and posterior polymorphous corneal dystrophy type 2. Alternative splicing results in multiple transcript variants. [provided by RefSeq, Jun 2014]
Protein Families:	Druggable Genome

Product images:

Coomassie blue staining of purified COL8A2 protein (Cat# TP316003). The protein was produced from HEK293T cells transfected with COL8A2 cDNA clone (Cat# [RC216003]) using MegaTran 2.0 (Cat# [TT210002]).