

Product datasheet for **TP316002L**

SLC25A33 (NM_032315) Human Recombinant Protein

Product data:

Product Type: Recombinant Proteins

Description: Recombinant protein of human solute carrier family 25, member 33 (SLC25A33), 1 mg

Species: Human

Expression Host: HEK293T

Expression cDNA Clone or AA Sequence: >RC216002 protein sequence
Red=Cloning site **Green**=Tags(s)

MATGGQKENTLLHLFAGGCGGTVGAIFTCPLEVIKTRLQSSRLALRTVYYPQVHLGTISGAGMVRPTSV
TPGLFQVLKSILEKEGPKSLFRGLGPNLVGVAPSRVYFACYSKAKEQFNGIFVPNSNIVHIFSAGSAAF
ITNSLMNPIWMVKTRMQLEQKVRGSKQMNTLQCARYVYQTEGIRGFYRGLTASYAGISETIICFAIYESL
KKYLKEAPLASSANGTEKNSTSFGLMAAAALSKGCASCIAYPHEVIRTRLREEGTKYKSFVQATARLVFR
EEGYLAFYRGLFAQLIRQIPNTAIVLSTYELIVYLLEDRTQ

TRTRPLEQKLISEEDLAANDILDYKDDDDKV

Tag: C-Myc/DDK

Predicted MW: 35.2 kDa

Concentration: >0.05 µg/µL as determined by microplate BCA method

Purity: > 80% as determined by SDS-PAGE and Coomassie blue staining

Buffer: 25 mM Tris-HCl, 100 mM glycine, pH 7.3, 10% glycerol

Preparation: Recombinant protein was captured through anti-DDK affinity column followed by conventional chromatography steps.

Note: For testing in cell culture applications, please filter before use. Note that you may experience some loss of protein during the filtration process.

Storage: Store at -80°C.

Stability: Stable for 12 months from the date of receipt of the product under proper storage and handling conditions. Avoid repeated freeze-thaw cycles.

RefSeq: [NP_115691](#)

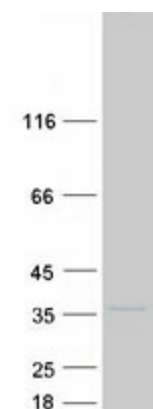
Locus ID: 84275



[View online »](#)

UniProt ID:	Q9BSK2
RefSeq Size:	1476
Cytogenetics:	1p36.22
RefSeq ORF:	963
Synonyms:	BMSC-MCP; PNC1
Summary:	SLC25A33 belongs to the SLC25 family of mitochondrial carrier proteins (Haitina et al., 2006 [PubMed 16949250]).[supplied by OMIM, Mar 2008]
Protein Families:	Transmembrane

Product images:



Coomassie blue staining of purified SLC25A33 protein (Cat# [TP316002]). The protein was produced from HEK293T cells transfected with SLC25A33 cDNA clone (Cat# [RC216002]) using MegaTran 2.0 (Cat# [TT210002]).