

Product datasheet for **TP315998M**

SYTL5 (NM_138780) Human Recombinant Protein

Product data:

Product Type: Recombinant Proteins
Description: Recombinant protein of human synaptotagmin-like 5 (SYTL5), 100 µg
Species: Human
Expression Host: HEK293T
Expression cDNA Clone or AA Sequence: >RC215998 representing NM_138780
Red=Cloning site **Green**=Tags(s)

MSKNSEFINLSFLLDHEKEMILGVLKRDEYLKKVEDKRIRKLNELLEAKRRSGKTQQEASRVCVHCHRN
LGLIFDRGDPCQACSLRVCRECRVAGPNGSWKCTVCDKIAQLRIITGEWFFEEKAKRFKQVNVLTGDVVR
QSILRRSPGAEVQSQEQTRQDAEKSDTSPVAGKKASHDGPKRKGFLLSKFRSATRGEIITPKTDTGRSY
SLDLDGQHFRSLKSPPGSDRSTGSSDLNDQEPGPRTPKSSRSNGVTPGTQSSPAPSTRVTSVISREYG
FENSMDLAAIEGTSQELTKSHRRNTSGTPSIAVSGTSLSSDQSRSELDLSEFTDESEDTVSIRSKSVPG
ALDKDSLEETEESIDALVSSQLSTNTHRLASGLSTTSLNSMMSVYSETGDYGNVKVSGEILLHISYCYKT
GGLYIFVKNCNRNLAIGDEKKQRRTDAYVKSYPDKSRNNKRKTKIRTGTNPEFNETLKYTISHTQLETRT
LQLSVWHYDRFGRNSFLGEVEIPFDSWNFENPTDEWFLVQPKVEFAPDIGLQYKGETVVLRYIPPEENL
MLPPEQLQGNKTFKKGKKEPVISGGILEVFIKEAKNLTAVKSGGTSDFVKGYLLPDDSKATKHKTLLV
IKKSVNPQWNHTFMFSGIHPQDIKNVCLTIWDKEAFSSNIFLGGVRLNSGSGVSHGKNVDWMDSQGEE
QRLWQKMANNPGTPEFVLMRLRSSMGKCRLL

TRTRPLEQKLISEEDLAANDILDYKDDDDKV

Tag: C-Myc/DDK
Predicted MW: 81.3 kDa
Concentration: >0.05 µg/µL as determined by microplate BCA method
Purity: > 80% as determined by SDS-PAGE and Coomassie blue staining
Buffer: 25 mM Tris-HCl, 100 mM glycine, pH 7.3, 10% glycerol
Preparation: Recombinant protein was captured through anti-DDK affinity column followed by conventional chromatography steps.
Note: For testing in cell culture applications, please filter before use. Note that you may experience some loss of protein during the filtration process.
Storage: Store at -80°C.



[View online >](#)

Stability: Stable for 12 months from the date of receipt of the product under proper storage and handling conditions. Avoid repeated freeze-thaw cycles.

RefSeq: [NP_620135](#)

Locus ID: 94122

UniProt ID: [Q8TDW5](#)

RefSeq Size: 2193

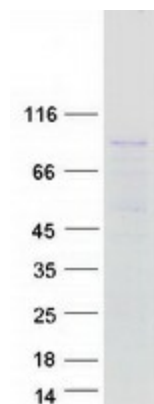
Cytogenetics: Xp11.4

RefSeq ORF: 2190

Synonyms: slp5

Summary: The protein encoded by this gene belongs to the synaptotagmin-like (Slp) protein family, which contains a unique homology domain at the N-terminus, referred to as the Slp homology domain (SHD). The SHD functions as a binding site for Rab27A, which plays a role in protein transport. Expression of this gene is restricted to placenta and liver, suggesting that it might be involved in Rab27A-dependent membrane trafficking in specific tissues. Alternatively spliced transcript variants encoding different isoforms have been found for this gene. [provided by RefSeq, Sep 2009]

Product images:



Coomassie blue staining of purified SYTL5 protein (Cat# [TP315998]). The protein was produced from HEK293T cells transfected with SYTL5 cDNA clone (Cat# [RC215998]) using MegaTran 2.0 (Cat# [TT210002]).