

## Product datasheet for **TP315998L**

### **SYTL5 (NM\_138780) Human Recombinant Protein**

#### **Product data:**

**Product Type:** Recombinant Proteins  
**Description:** Recombinant protein of human synaptotagmin-like 5 (SYTL5), 1 mg  
**Species:** Human  
**Expression Host:** HEK293T  
**Expression cDNA Clone or AA Sequence:** >RC215998 representing NM\_138780  
**Red**=Cloning site **Green**=Tags(s)

MSKNSEFINLSFLLDHEKEMILGVLKRDEYLKKVEDKRIRKLNELLEAKRRSGKTQQEASRVCVHCHRN  
LGLIFDRGDPCQACSLRVCRECRVAGPNGSWKCTVCDKIAQLRIITGEWFFEEKAKRFKQVNVLTGDVVR  
QSILRRSPGAEVQSQEQRQDAEKSDTSPVAGKKASHDGPKRKGFLLSKFRSATRGEIITPKTDTGRSY  
SLDLDGQHFRSLKSPPGSDRSTGSSDLNDQEPGPRTPKSSRSNGVTPGTQSSPAPSTRVTSVISREYG  
FENSMDLAAIEGTSQELTKSHRRNTSGTPSIAVSGTSLSSDQSRSELDLSEFTDESEDTVSIRSKSVPG  
ALDKDSLEETEESIDALVSSQLSTNTHRLASGLSTTSLNSMMSVYSETGDYGNVKVSGEILLHISYCYKT  
GGLYIFVKNCNRNLAIGDEKKQRRTDAYVKSYPDKSRNNKRKTKIRTGTNPEFNETLKYTISHTQLETRT  
LQLSVWHYDRFGRNSFLGEVEIPFDSWNFENPTDEWFLVQPKVEFAPDIGLQYKGETVVLRYIPPEENL  
MLPPEQLQGNKTFKKGKKKESPVISGGILEVFIKEAKNLTAVKSGGTSDFVKGYLLPDDSKATKHKTLLV  
IKKSVNPQWNHTFMFSGIHPQDIKNVCLLETIWDKEAFSSNIFLGGVRLNSGSGVSHGKNVDWMDSQGEE  
QRLWQKMANNPGTPEFEGVLMRLRSSMGKCRLL

**TRTRPLEQKLISEEDLAANDILDYKDDDDKV**

**Tag:** C-Myc/DDK  
**Predicted MW:** 81.3 kDa  
**Concentration:** >0.05 µg/µL as determined by microplate BCA method  
**Purity:** > 80% as determined by SDS-PAGE and Coomassie blue staining  
**Buffer:** 25 mM Tris-HCl, 100 mM glycine, pH 7.3, 10% glycerol  
**Preparation:** Recombinant protein was captured through anti-DDK affinity column followed by conventional chromatography steps.  
**Note:** For testing in cell culture applications, please filter before use. Note that you may experience some loss of protein during the filtration process.  
**Storage:** Store at -80°C.



[View online »](#)

**Stability:** Stable for 12 months from the date of receipt of the product under proper storage and handling conditions. Avoid repeated freeze-thaw cycles.

**RefSeq:** [NP\\_620135](#)

**Locus ID:** 94122

**UniProt ID:** [Q8TDW5](#)

**RefSeq Size:** 2193

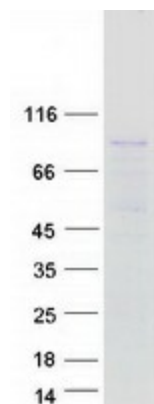
**Cytogenetics:** Xp11.4

**RefSeq ORF:** 2190

**Synonyms:** slp5

**Summary:** The protein encoded by this gene belongs to the synaptotagmin-like (Slp) protein family, which contains a unique homology domain at the N-terminus, referred to as the Slp homology domain (SHD). The SHD functions as a binding site for Rab27A, which plays a role in protein transport. Expression of this gene is restricted to placenta and liver, suggesting that it might be involved in Rab27A-dependent membrane trafficking in specific tissues. Alternatively spliced transcript variants encoding different isoforms have been found for this gene. [provided by RefSeq, Sep 2009]

### Product images:



Coomassie blue staining of purified SYTL5 protein (Cat# [TP315998]). The protein was produced from HEK293T cells transfected with SYTL5 cDNA clone (Cat# [RC215998]) using MegaTran 2.0 (Cat# [TT210002]).