

Product datasheet for TP315998

SYTL5 (NM_138780) Human Recombinant Protein

Product data:

Product Type:	Recombinant Proteins
Description:	Recombinant protein of human synaptotagmin-like 5 (SYTL5), 20 µg
Species:	Human
Expression Host:	HEK293T
Expression cDNA Clone or AA Sequence:	>RC215998 representing NM_138780 Red=Cloning site Green=Tags(s)

MSKNSEFINLSFLLDHEKEMILGVLKRDEYLKKVEDKRIRKLNELLEAKRRSGKTQQEASRVCVHCHRN
LGLIFDRGDPCQACSLRVCRECRVAGPNGSWKCTVCDKIAQLRIITGEWFFEEKAKRFKQVNVLTGDVVR
QSILRRSPGAEVQSSEQTRQDAEKSDTSPVAGKKASHDGPKRKGFLLSKFRSATRGEIITPKTDTGRSY
SLDLDGQHFRSLKSPPGSDRSTGSSDLNDQEPGPRTPKSSRSNGVTPGTQSSPAPSTRVTSVISREYG
FENSMDLAAIEGTSQELTKSHRRNTSGTPSIAVSGTSLSSDQSRSELDLSEFTDESEDTVSIRSKSVPG
ALDKDSLEETEESIDALVSSQLSTNTHRLASGLSTTSLNSMMSVYSETGDYGNVKVSGEILLHISYCYKT
GGLYIFVKNCNRNLAIGDEKKQRRTDAYVKSYPDKSRNNKRKTKIRTGTNPEFNETLKYTISHTQLETRT
LQLSVWHYDRFGRNSFLGEVEIPFDSWNFENPTDEWFLVQPKVEFAPDIGLQYKGETVVLRYIPPEENL
MLPPEQLQGNKTFKKGKKKESPVISGGILEVFIKEAKNLTAVKSGGTSDFVKGYLLPDDSKATKHKTLLV
IKKSVNPQWNHTFMFSGIHPQDIKNVCLLETIWDKEAFSSNIFLGGVRLNSGSGVSHGKNVDWMDSQGEE
QRLWQKMANNPGTPEFEGVLMRLRSSMGKCRLL

TRTRPLEQKLISEEDLAANDILDYKDDDDKV

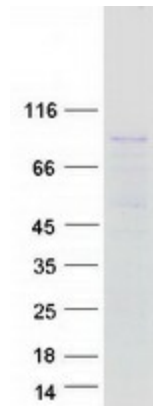
Tag:	C-Myc/DDK
Predicted MW:	81.3 kDa
Concentration:	>0.05 µg/µL as determined by microplate BCA method
Purity:	> 80% as determined by SDS-PAGE and Coomassie blue staining
Buffer:	25 mM Tris-HCl, 100 mM glycine, pH 7.3, 10% glycerol
Preparation:	Recombinant protein was captured through anti-DDK affinity column followed by conventional chromatography steps.
Note:	For testing in cell culture applications, please filter before use. Note that you may experience some loss of protein during the filtration process.
Storage:	Store at -80°C.



[View online »](#)

Stability:	Stable for 12 months from the date of receipt of the product under proper storage and handling conditions. Avoid repeated freeze-thaw cycles.
RefSeq:	NP_620135
Locus ID:	94122
UniProt ID:	Q8TDW5
RefSeq Size:	2193
Cytogenetics:	Xp11.4
RefSeq ORF:	2190
Synonyms:	slp5
Summary:	The protein encoded by this gene belongs to the synaptotagmin-like (Slp) protein family, which contains a unique homology domain at the N-terminus, referred to as the Slp homology domain (SHD). The SHD functions as a binding site for Rab27A, which plays a role in protein transport. Expression of this gene is restricted to placenta and liver, suggesting that it might be involved in Rab27A-dependent membrane trafficking in specific tissues. Alternatively spliced transcript variants encoding different isoforms have been found for this gene. [provided by RefSeq, Sep 2009]

Product images:



Coomassie blue staining of purified SYTL5 protein (Cat# TP315998). The protein was produced from HEK293T cells transfected with SYTL5 cDNA clone (Cat# [RC215998]) using MegaTran 2.0 (Cat# [TT210002]).