

## Product datasheet for **TP315995L**

### Estrogen Related Receptor beta (ESRRB) (NM\_004452) Human Recombinant Protein

#### Product data:

Product Type:	Recombinant Proteins
Description:	Purified recombinant protein of Homo sapiens estrogen-related receptor beta (ESRRB), 1 mg
Species:	Human
Expression Host:	HEK293T
Expression cDNA Clone or AA Sequence:	>RC215995 representing NM_004452 <b>Red</b> =Cloning site <b>Green</b> =Tags(s)

MSSDDRHLGSSCGSFIKTEPSSPSSGIDALSHHSPSGSSDASGGFGLALGTHANGLDSPPMFAGAGLGGT  
PCRKSYEDCASGIMEDSAIKCEYMLNAIPKRLCLVCGDIASGYHYGVASCEACKAFFKRTIQGNIEYSCP  
ATNECEITKRRRKSCQACRFMKCLKVGMLEKEGVRDLDRVRGGRQKYKRRLDSESSPYLSLQISPPAKKPLT  
KIVSYLLVAEPDKLYAMPPPGMPEGDIKALTTLCDLADRELVVIIGWAKHIPGFSSLSLGDQMSLLQSAW  
MEILILGIVYRSLPYDDKLVAEDYIMDEEHSRLAGLLELYRAILQLVRRYKCLKVEKEEFVTLKALALA  
NSDSMYIEDLEAVQKLQDLLHEALQDYELSQLRHEEPWRTGKLLLTPLLRQTAAKAVQHFYSVKLQGVKVP  
MHKLFLEMLEAKAWARADSLQEWPRLEQVPSPLHRATKRQHVHFLTPLPPPSVAWVGTAQAGYHLEVFL  
PQRAGWPRAA

**TRTRPLEQKLISEEDLAANDILDYKDDDDKV**

Tag:	C-Myc/DDK
Predicted MW:	56 kDa
Concentration:	>0.05 µg/µL as determined by microplate BCA method
Purity:	> 80% as determined by SDS-PAGE and Coomassie blue staining
Buffer:	25 mM Tris-HCl, 100 mM glycine, pH 7.3, 10% glycerol
Preparation:	Recombinant protein was captured through anti-DDK affinity column followed by conventional chromatography steps.
Note:	For testing in cell culture applications, please filter before use. Note that you may experience some loss of protein during the filtration process.
Storage:	Store at -80°C.
Stability:	Stable for 12 months from the date of receipt of the product under proper storage and handling conditions. Avoid repeated freeze-thaw cycles.



[View online »](#)

RefSeq: [NP\\_004443](#)

Locus ID: 2103

UniProt ID: [Q95718](#)

RefSeq Size: 2193

Cytogenetics: 14q24.3

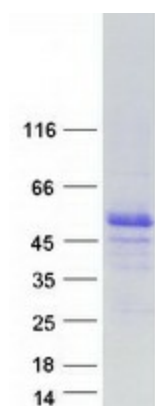
RefSeq ORF: 1500

Synonyms: DFNB35; ERR2; ERRb; ERR beta-2; ERRbeta2; ESRL2; NR3B2

**Summary:** This gene encodes a protein with similarity to the estrogen receptor. Its function is unknown; however, a similar protein in mouse plays an essential role in placental development. [provided by RefSeq, Jul 2008]

**Protein Families:** Druggable Genome, Nuclear Hormone Receptor, Transcription Factors

### Product images:



Coomassie blue staining of purified ESRRB protein (Cat# [TP315995]). The protein was produced from HEK293T cells transfected with ESRRB cDNA clone (Cat# [RC215995]) using MegaTran 2.0 (Cat# [TT210002]).