

Product datasheet for TP315992M

MSI1 (NM_002442) Human Recombinant Protein

Product data:

Product Type:	Recombinant Proteins
Description:	Recombinant protein of human musashi homolog 1 (Drosophila) (MSI1), 100 µg
Species:	Human
Expression Host:	HEK293T
Expression cDNA Clone or AA Sequence:	>RC215992 representing NM_002442 Red=Cloning site Green=Tags(s)

METDAPQPGLASPDSPHDPCMKFIGGLSWQTTQEGLREYFGQFGEVKECLVMRDPLTKRSRGFGFVTFMD
QAGVDKVLQSRHELDSKTIDPKVAFPRRAQPKMVTTRKKIFVGGLSVNTTVEDVKQYFEQFGKVDAML
MFDKTTNRHRGFGFVTFESEDIVEKVCEIHFEINNKMVECKKAQPKEVMSPTGSARGRSRVMPYGMDF
MLGIGMLGYPGFQATTYASRSYTGAPGYTYQFPEFRVERTPLPSAPVLPeltaIPLTAYGPMAAAAAAA
AVVRGTGSHPWMTMAPPSTGTPSRTGGFLGTTSPGPMAELYGAANQDSGVSSYISAASPAPSTGFGHSLGG
PLIATAFTNGYH

TRTRPLEQKLISEEDLAANDILDYKDDDDKV

Tag:	C-Myc/DDK
Predicted MW:	38.9 kDa
Concentration:	>0.05 µg/µL as determined by microplate BCA method
Purity:	> 80% as determined by SDS-PAGE and Coomassie blue staining
Buffer:	25 mM Tris-HCl, 100 mM glycine, pH 7.3, 10% glycerol
Preparation:	Recombinant protein was captured through anti-DDK affinity column followed by conventional chromatography steps.
Note:	For testing in cell culture applications, please filter before use. Note that you may experience some loss of protein during the filtration process.
Storage:	Store at -80°C.
Stability:	Stable for 12 months from the date of receipt of the product under proper storage and handling conditions. Avoid repeated freeze-thaw cycles.
RefSeq:	NP_002433
Locus ID:	4440



[View online »](#)

UniProt ID: [O43347](#)

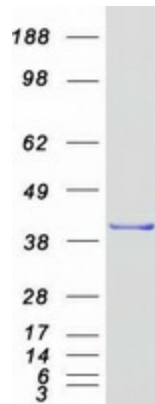
RefSeq Size: 2950

Cytogenetics: 12q24.31

RefSeq ORF: 1086

Summary: This gene encodes a protein containing two conserved tandem RNA recognition motifs. Similar proteins in other species function as RNA-binding proteins and play central roles in posttranscriptional gene regulation. Expression of this gene has been correlated with the grade of the malignancy and proliferative activity in gliomas and melanomas. A pseudogene for this gene is located on chromosome 11q13. [provided by RefSeq, Jul 2008]

Product images:



Coomassie blue staining of purified MSI1 protein (Cat# [TP315992]). The protein was produced from HEK293T cells transfected with MSI1 cDNA clone (Cat# [RC215992]) using MegaTran 2.0 (Cat# [TT210002]).