

Product datasheet for **TP315992L**

MSI1 (NM_002442) Human Recombinant Protein

Product data:

Product Type: Recombinant Proteins
Description: Recombinant protein of human musashi homolog 1 (Drosophila) (MSI1), 1 mg
Species: Human
Expression Host: HEK293T
Expression cDNA Clone or AA Sequence: >RC215992 representing NM_002442
Red=Cloning site **Green**=Tags(s)

METDAPQPGLASPDSPHDPCKMFIGGLSWQTTQEGLREYFGQFGEVKECLVMRDPLTKRSRGFGFVTFMD
QAGVDKVLQSRHELDSKTIDPKVAFPRRAQPKMVTTRKKIFVGGLSVNTTVEDVKQYFEQFGKVDLAML
MFDKTTNRHRGFGFVTFESEDIVEKVCEIHFHEINNKMVECKKAQPKEVMSPTGSARGRSRVMPIYGMDF
MLGIGMLGYPGFQATTYASRSYTGAPGYTYQFPEFRVERTPLPSAPVLPeltaIPLTAYGPMAAAAAAA
AVVRGTGSHPWMTMAPPSTGTPSRTGGFLGTTSPGPMAELYGAANQDSGVSSYISAASPAPSTGFGHSLGG
PLIATAFTNGYH

TRTRPLEQKLISEEDLAANDILDYKDDDDKV

Tag: C-Myc/DDK
Predicted MW: 38.9 kDa
Concentration: >0.05 µg/µL as determined by microplate BCA method
Purity: > 80% as determined by SDS-PAGE and Coomassie blue staining
Buffer: 25 mM Tris-HCl, 100 mM glycine, pH 7.3, 10% glycerol
Preparation: Recombinant protein was captured through anti-DDK affinity column followed by conventional chromatography steps.
Note: For testing in cell culture applications, please filter before use. Note that you may experience some loss of protein during the filtration process.
Storage: Store at -80°C.
Stability: Stable for 12 months from the date of receipt of the product under proper storage and handling conditions. Avoid repeated freeze-thaw cycles.
RefSeq: [NP_002433](#)
Locus ID: 4440



[View online »](#)

UniProt ID: [O43347](#)

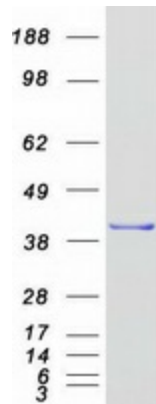
RefSeq Size: 2950

Cytogenetics: 12q24.31

RefSeq ORF: 1086

Summary: This gene encodes a protein containing two conserved tandem RNA recognition motifs. Similar proteins in other species function as RNA-binding proteins and play central roles in posttranscriptional gene regulation. Expression of this gene has been correlated with the grade of the malignancy and proliferative activity in gliomas and melanomas. A pseudogene for this gene is located on chromosome 11q13. [provided by RefSeq, Jul 2008]

Product images:



Coomassie blue staining of purified MSI1 protein (Cat# [TP315992]). The protein was produced from HEK293T cells transfected with MSI1 cDNA clone (Cat# [RC215992]) using MegaTran 2.0 (Cat# [TT210002]).