

Product datasheet for **TP315959L**

SPACA3 (NM_173847) Human Recombinant Protein

Product data:

Product Type: Recombinant Proteins

Description: Recombinant protein of human sperm acrosome associated 3 (SPACA3), 1 mg

Species: Human

Expression Host: HEK293T

Expression cDNA Clone or AA Sequence: >RC215959 protein sequence
Red=Cloning site **Green**=Tags(s)

MVSALRGAPLIRVHSSPVSSPSVSGPRRLVSLSSQSSALSQSGGGSTSAAGIEARSRALRRRWCPAGIM
LLALVCLLSCLLPSSSEAKLYGRCELARVLHDFGLDGYRGYSLADWVCLAYFTSGFNAAALDYEADGSTNN
GIFQINSRRWCSNLTPNVPNVCRCMYCSDLLNPNLKDTVICAMKITQEPQGLGYWEAWRHHCQGKDLTEWV
DGCDF

TRTRPLEQKLISEEDLAANDILDYKDDDDKV

Tag: C-Myc/DDK

Predicted MW: 23.3 kDa

Concentration: >0.05 µg/µL as determined by microplate BCA method

Purity: > 80% as determined by SDS-PAGE and Coomassie blue staining

Buffer: 25 mM Tris-HCl, 100 mM glycine, pH 7.3, 10% glycerol

Preparation: Recombinant protein was captured through anti-DDK affinity column followed by conventional chromatography steps.

Note: For testing in cell culture applications, please filter before use. Note that you may experience some loss of protein during the filtration process.

Storage: Store at -80°C.

Stability: Stable for 12 months from the date of receipt of the product under proper storage and handling conditions. Avoid repeated freeze-thaw cycles.

RefSeq: [NP_776246](#)

Locus ID: 124912

UniProt ID: [Q8IXA5](#), [A0A080YUZ7](#)



[View online >](#)

RefSeq Size: 819

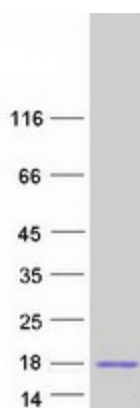
Cytogenetics: 17q11.2

RefSeq ORF: 645

Synonyms: ALLP17; CT54; LYC3; LYZC; LYZL3; SLLP1

Summary: The protein encoded by this gene is a sperm surface protein that may be involved in adhesion to the egg prior to fertilization. While the encoded protein has significant similarity to lysozyme at the amino acid level, it has no detectable bacteriocidal activity. Several transcript variants encoding different isoforms have been found for this gene. [provided by RefSeq, Nov 2015]

Product images:



Coomassie blue staining of purified SPACA3 protein (Cat# [TP315959]). The protein was produced from HEK293T cells transfected with SPACA3 cDNA clone (Cat# [RC215959]) using MegaTran 2.0 (Cat# [TT210002]).