

## Product datasheet for TP315926

### ATP8B2 (NM\_001005855) Human Recombinant Protein

#### Product data:

Product Type:	Recombinant Proteins
Description:	Recombinant protein of human ATPase, class I, type 8B, member 2 (ATP8B2), transcript variant 2, 20 µg
Species:	Human
Expression Host:	HEK293T
Expression cDNA Clone or AA Sequence:	>RC215926 representing NM_001005855 Red=Cloning site Green=Tags(s)

MAVCAKKRPPEEERRARANDREYNEKFQYASNCIKTSKYNILTFLPVNLFQEQFQEVANTYFLFLLILQLI  
PQISSLSWFTTIVPLVLVLTITAVKDATDDYFRHKSNDQVNNRQSQVLINGILQQEQWMNVCVGDIIKLE  
NNQFVAADLLLLSSSEPHGLCYIETAELDGETNMKVRQAIPVTSELGDISKLAKFDGEVICEPPNKLDK  
FSGTLYWKENKFPLSNQNMLLRGCVLRNTEWCFGLVIFAGPDTKLMQNSGRTKFKRTSIDRLMNTLVLWI  
FGFLVCMGVILAIGNAIWEHEVGMRFQVYLPWDEAVDSAFFSGFLSFWSYIIILNTVPISLYVRYVPSL  
TWGLSRESGGPIELFFSMKMKSLRSNEKSSSSCTVNI

TRTRPLEQKLISEEDLAANDILDYKDDDDKV

Tag:	C-Myc/DDK
Predicted MW:	44 kDa
Concentration:	>0.05 µg/µL as determined by microplate BCA method
Purity:	> 80% as determined by SDS-PAGE and Coomassie blue staining
Buffer:	25 mM Tris-HCl, 100 mM glycine, pH 7.3, 10% glycerol
Preparation:	Recombinant protein was captured through anti-DDK affinity column followed by conventional chromatography steps.
Note:	For testing in cell culture applications, please filter before use. Note that you may experience some loss of protein during the filtration process.
Storage:	Store at -80°C.
Stability:	Stable for 12 months from the date of receipt of the product under proper storage and handling conditions. Avoid repeated freeze-thaw cycles.
RefSeq:	<u><a href="#">NP_001005855</a></u>



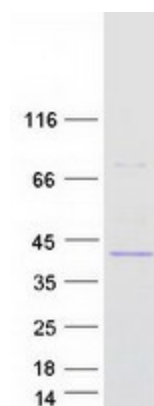
[View online »](#)

Locus ID: 57198  
UniProt ID: [P98198](#)  
RefSeq Size: 1560  
Cytogenetics: 1q21.3  
RefSeq ORF: 1161  
Synonyms: ATPID

**Summary:** The protein encoded by this gene belongs to the family of P-type cation transport ATPases, and to the subfamily of aminophospholipid-transporting ATPases. The aminophospholipid translocases transport phosphatidylserine and phosphatidylethanolamine from one side of a bilayer to another. Alternatively spliced transcript variants encoding different isoforms have been identified. [provided by RefSeq, Jul 2008]

**Protein Families:** Transmembrane

### Product images:



Coomassie blue staining of purified ATP8B2 protein (Cat# TP315926). The protein was produced from HEK293T cells transfected with ATP8B2 cDNA clone (Cat# [RC215926]) using MegaTran 2.0 (Cat# [TT210002]).