

## Product datasheet for TP315910M

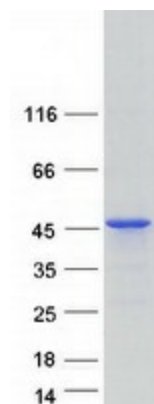
### MAGIX (NM\_024859) Human Recombinant Protein

#### Product data:

|                                       |  |
|---------------------------------------|--|
| Product Type:                         | Recombinant Proteins   |
| Description:                          | Recombinant protein of human MAGI family member, X-linked (MAGIX), transcript variant 1, 100 µg  |
| Species:                              | Human  |
| Expression Host:                      | HEK293T  |
| Expression cDNA Clone or AA Sequence: | >RC215910 representing NM_024859<br><span style="color: red;">Red</span> =Cloning site <span style="color: green;">Green</span> =Tags(s)<br><br>MEPRTGGAANPKGSRGSRGPSPLAGPSARQLLARLDARPLAARAAMDVAALVRRAGATLRLRRKEAVSVL<br>DSADIEVTD SRLPHATIVDHRPQHRWLET CNAPPQLIQGKARSAPKPSQASGHFVELVRGYAGFGLTLG<br>GGRDVAGDTPLAVRGLLKDGPAQRCGRLEVGDVLHNGESTQGLTHAQAVIRIRAGGPQLHLVIRRPLE<br>THPGKPRGVGEPRKGVVPSWPDRSPDPGGPEVTGSRSSSTSLVQHPPSRTLKTRGSPPEPSPEAAADGP<br>TVSPERRAEDPNDQIPGSPGPWLVPSEERLSRALGVRGAAQLAQEMAAGRHH<br><br><span style="color: red;">TR</span> <span style="color: green;">TRPLEQKLISEEDLAANDILDYKDDDDKV</span> |
| Tag:                                  | C-Myc/DDK  |
| Predicted MW:                         | 35 kDa   |
| Concentration:                        | >0.05 µg/µL as determined by microplate BCA method   |
| Purity:                               | > 80% as determined by SDS-PAGE and Coomassie blue staining  |
| Buffer:                               | 25 mM Tris-HCl, 100 mM glycine, pH 7.3, 10% glycerol   |
| Preparation:                          | Recombinant protein was captured through anti-DDK affinity column followed by conventional chromatography steps.   |
| Note:                                 | For testing in cell culture applications, please filter before use. Note that you may experience some loss of protein during the filtration process.   |
| Storage:                              | Store at -80°C.  |
| Stability:                            | Stable for 12 months from the date of receipt of the product under proper storage and handling conditions. Avoid repeated freeze-thaw cycles.  |
| RefSeq:                               | <a href="#">NP_079135</a>  |
| Locus ID:                             | 79917  |


[View online »](#)

UniProt ID: Q9H6Y5  
 RefSeq Size: 2150  
 Cytogenetics: Xp11.23  
 RefSeq ORF: 1002  
 Synonyms: JM10; PDZX

**Product images:**


Coomassie blue staining of purified MAGIX protein (Cat# [TP315910]). The protein was produced from HEK293T cells transfected with MAGIX cDNA clone (Cat# [RC215910]) using MegaTran 2.0 (Cat# [TT210002]).