

Product datasheet for **TP315886M**

RSPH6A (NM_030785) Human Recombinant Protein

Product data:

| | |
|---------------------------------------|--|
| Product Type: | Recombinant Proteins |
| Description: | Recombinant protein of human radial spokehead-like 1 (RSHL1), 100 µg |
| Species: | Human |
| Expression Host: | HEK293T |
| Expression cDNA Clone or AA Sequence: | >RC215886 representing NM_030785 Red=Cloning site Green=Tags(s) |

MGDLPPYPERPAQQPPGRRTSQASQRRHSRDQAQALAADPEERQQIPPDAAQRNAPGWSQRGSLSQQE
 NLL
 MPQVFQAEEARLGGMEYPSVNTGFPSEFQPQPYSDESRMQVAELTTSMLQLRLQQGSSLFQQLDPTF
 QE
 PPVNPLGQFNLYQTDQFSEGAQHGPYIRDDPALQLPSELGFPHYSAQVPEPEPELEAVQNAKAYLLQTS
 INCDSLSEHLVNLTKILNQRPEPLSVLESNRTTQWEWFHPKLDLTDPEMQPTYKMAEKQKALFT
 RSGGGTEGEQEMEEVGETPVPNIMETAFYFEQAGVGLSSDESFRIFLAMKQLVEQQPIHTCRFWGKILG
 IKRSYLVAEVEFREGEAEAEVEEMTEGGEVMEAHGEEGEDEEKAVDIVPKSVWKPVPVPIKEESR
 SGANKYLYFVCNEPGLPWTRLPHVTPAQIVNARKIKKFTGYLDTPVVSYPFPNGEANYLRAQIARISA
 ATQVSPPLGFYQFSEEEGDEEEGGAGRDSYEENPDFEGIPVLELVDSMANVWHHTQHILPQGRCTWVNP
 L
 QKTEEEEDLGEEEKADEGPVEVEQEVGPPLLTPLSEDAEIMHLAPWTTTLSCSLCPQYSVAVVRSNLWP
 GAYAYASGKKFENIYIGWGHKYSPEFNPALPAPIQQEYPSGPEIMEMSDPTVEEEQALKAAQEALGAT
 EEEEEEEEEGEETDD

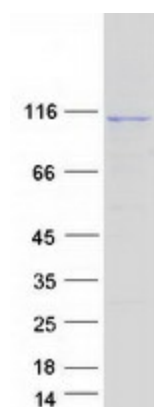
TRTRPLEQKLISEEDLAANDILDYKDDDDKV

| | |
|----------------|--|
| Tag: | C-Myc/DDK |
| Predicted MW: | 80.7 kDa |
| Concentration: | >0.05 µg/µL as determined by microplate BCA method |
| Purity: | > 80% as determined by SDS-PAGE and Coomassie blue staining |
| Buffer: | 25 mM Tris-HCl, 100 mM glycine, pH 7.3, 10% glycerol |
| Preparation: | Recombinant protein was captured through anti-DDK affinity column followed by conventional chromatography steps. |


[View online »](#)

| | |
|----------------------|--|
| Note: | For testing in cell culture applications, please filter before use. Note that you may experience some loss of protein during the filtration process. |
| Storage: | Store at -80°C. |
| Stability: | Stable for 12 months from the date of receipt of the product under proper storage and handling conditions. Avoid repeated freeze-thaw cycles. |
| RefSeq: | NP_110412 |
| Locus ID: | 81492 |
| UniProt ID: | Q9H0K4 |
| RefSeq Size: | 2477 |
| Cytogenetics: | 19q13.32 |
| RefSeq ORF: | 2151 |
| Synonyms: | RSHL1; RSP4; RSP6; RSPH4B |
| Summary: | The protein encoded by this gene is similar to a sea urchin radial spoke head protein. Radial spoke protein complexes form part of the axoneme of eukaryotic flagella and are located between the axoneme's outer ring of doublet microtubules and central pair of microtubules. In Chlamydomonas, radial spoke proteins are thought to regulate the activity of dynein and the symmetry of flagellar bending patterns. This gene maps to a region of chromosome 19 that is linked to primary ciliary dyskinesia-2 (CILD2). [provided by RefSeq, Jul 2008] |

Product images:



Coomassie blue staining of purified RSPH6A protein (Cat# [TP315886]). The protein was produced from HEK293T cells transfected with RSPH6A cDNA clone (Cat# [RC215886]) using MegaTran 2.0 (Cat# [TT210002]).