

Product datasheet for **TP315886L**

RSPH6A (NM_030785) Human Recombinant Protein

Product data:

Product Type: Recombinant Proteins

Description: Recombinant protein of human radial spokehead-like 1 (RSHL1), 1 mg

Species: Human

Expression Host: HEK293T

Expression cDNA Clone or AA Sequence: >RC215886 representing NM_030785
Red=Cloning site **Green**=Tags(s)

MGDLPPYPERPAQQPPGRRTSQASQRRHSRDQAQALAADPEERQQIPPDAAQRNAPGWSQRGSLSQQE
NLL
MPQVFQAEEARLGGMEYPSVNTGFPSEFQPQPYSDESRMQVAELTTSMLQRLQQGQSSLFQQLDPTF
QE
PPVNPLGQFNLYQTDQFSEGAQHGPYIRDDPALQFLPSELGFPHYSAQVPEPEPELEAVQNAKAYLLQTS
INCDLSLYEHLVNLLTKILNQRPEDPLSVLESNRTTQWEWFHPKLDLTDPEMQPTYKMAEKQKALFT
RSGGGTEGEQEMEEVGETPVPNIMETAFYFEQAGVGLSSDESFRIFLAMKQLVEQQPIHTCRFWGKILG
IKRSYLVAEVEFREGEAEAEVEEMTEGGEVMEAHGEEGEEDEEKAVDIVPKSVWKPVPVPIKEESR
SGANKYLYFVCNEPGLPWTRLPHVTPAQIVNARKIKKFFTGYLDTPVVSYPFPGNEANYLRAQIARISA
ATQVSPPLGFYQFSEEEGDEEEEGGAGRDSYEENPDFEGIPVLELVDSMANVWHHTQHILPQGRCTWVNP
L
QKTEEEEDLGEEEKADEGPVEVEQEVGPPLLTPLSEDAEIMHLAPWTTTLSCSLCPQYSVAVVRSNLWP
GAYAYASGKKFENIYIGWGHKYSPEFNPALPAPIQQEYPSGPEIMEMS DPTVEEEQALKAAQEALGAT
EEEEEEEEEEGEETDD

TRTRPLEQKLISEEDLAANDILDYKDDDDKV

Tag: C-Myc/DDK

Predicted MW: 80.7 kDa

Concentration: >0.05 µg/µL as determined by microplate BCA method

Purity: > 80% as determined by SDS-PAGE and Coomassie blue staining

Buffer: 25 mM Tris-HCl, 100 mM glycine, pH 7.3, 10% glycerol

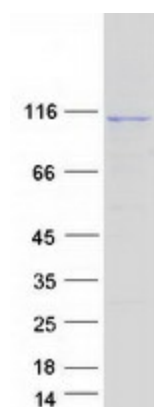
Preparation: Recombinant protein was captured through anti-DDK affinity column followed by conventional chromatography steps.



[View online »](#)

Note:	For testing in cell culture applications, please filter before use. Note that you may experience some loss of protein during the filtration process.
Storage:	Store at -80°C.
Stability:	Stable for 12 months from the date of receipt of the product under proper storage and handling conditions. Avoid repeated freeze-thaw cycles.
RefSeq:	NP_110412
Locus ID:	81492
UniProt ID:	Q9H0K4
RefSeq Size:	2477
Cytogenetics:	19q13.32
RefSeq ORF:	2151
Synonyms:	RSHL1; RSP4; RSP6; RSPH4B
Summary:	The protein encoded by this gene is similar to a sea urchin radial spoke head protein. Radial spoke protein complexes form part of the axoneme of eukaryotic flagella and are located between the axoneme's outer ring of doublet microtubules and central pair of microtubules. In Chlamydomonas, radial spoke proteins are thought to regulate the activity of dynein and the symmetry of flagellar bending patterns. This gene maps to a region of chromosome 19 that is linked to primary ciliary dyskinesia-2 (CILD2). [provided by RefSeq, Jul 2008]

Product images:



Coomassie blue staining of purified RSPH6A protein (Cat# [TP315886]). The protein was produced from HEK293T cells transfected with RSPH6A cDNA clone (Cat# [RC215886]) using MegaTran 2.0 (Cat# [TT210002]).