

Product datasheet for **TP315882L**

RNPS1 (NM_080594) Human Recombinant Protein

Product data:

Product Type:	Recombinant Proteins
Description:	Recombinant protein of human RNA binding protein S1, serine-rich domain (RNPS1), transcript variant 2, 1 mg
Species:	Human
Expression Host:	HEK293T
Expression cDNA Clone or AA Sequence:	>RC215882 protein sequence Red =Cloning site Green =Tags(s)
	 MDLSGVKKKSLGKVENNKKSSSTRAPSPTRKDRSDEKSKDRSKDKGATKESSEKDRGRDKTRKRRSASS GSSSTRSRSSSTSSSGSSTSTGSSSSGSSSSASSRSGSSTSRSSSSSSSSGSPSPSRRRHDNRRRSRSK SKPPKRDEKERKRRSPSPKPTKVHIGRLTRNVTKDHIMEIFSTYGKIKMIDMPVERMHPHLSKGYAYVEF ENPDEAEKALKHMDGGQIDGQEITATAVLAPWPRPPRRFSPRRMLPPPPMWRSPPRMRRRSRSPRRR SPVRRRSRSPGRRRHRSRSSNSR TRTRPLEQKLISEEDLAANDILDYKDDDDKV
Tag:	C-Myc/DDK
Predicted MW:	34 kDa
Concentration:	>0.05 µg/µL as determined by microplate BCA method
Purity:	> 80% as determined by SDS-PAGE and Coomassie blue staining
Buffer:	25 mM Tris-HCl, 100 mM glycine, pH 7.3, 10% glycerol
Preparation:	Recombinant protein was captured through anti-DDK affinity column followed by conventional chromatography steps.
Note:	For testing in cell culture applications, please filter before use. Note that you may experience some loss of protein during the filtration process.
Storage:	Store at -80°C.
Stability:	Stable for 12 months from the date of receipt of the product under proper storage and handling conditions. Avoid repeated freeze-thaw cycles.
RefSeq:	<u>NP_542161</u>
Locus ID:	10921



[View online »](#)

UniProt ID: [Q15287](#), [D3DU92](#)

RefSeq Size: 2251

Cytogenetics: 16p13.3

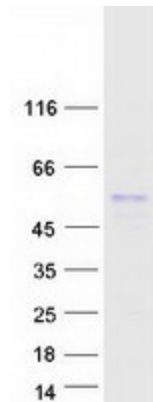
RefSeq ORF: 915

Synonyms: E5.1

Summary: This gene encodes a protein that is part of a post-splicing multiprotein complex involved in both mRNA nuclear export and mRNA surveillance. mRNA surveillance detects exported mRNAs with truncated open reading frames and initiates nonsense-mediated mRNA decay (NMD). When translation ends upstream from the last exon-exon junction, this triggers NMD to degrade mRNAs containing premature stop codons. This protein binds to the mRNA and remains bound after nuclear export, acting as a nucleocytoplasmic shuttling protein. This protein contains many serine residues. Several transcript variants encoding different isoforms have been found for this gene. [provided by RefSeq, Nov 2013]

Protein Families: Transcription Factors

Product images:



Coomassie blue staining of purified RNPS1 protein (Cat# [TP315882]). The protein was produced from HEK293T cells transfected with RNPS1 cDNA clone (Cat# [RC215882]) using MegaTran 2.0 (Cat# [TT210002]).